



1951TM

Foundations



Designed Around Your Budget:

Drawing on 70 years of industry experience, 1951 Cabinetry is proud to unveil our latest offering: 1951 Foundations. This addition to our product lineup perfectly embodies our commitment to delivering relevant, yet classic cabinetry solutions. 1951 Foundations combines craftsmanship with quality that meets affordability, empowering homeowners to effortlessly create timeless kitchens, baths, and other living spaces, within budget.

Quality and Value is Our Style:

At 1951 Cabinetry, we stand behind every 1951 Foundations cabinet with a limited lifetime warranty. Our cabinets are thoughtfully crafted to meet the demands of everyday life while exuding style and timeless appeal. With a focus on quality and value, 1951 Foundations features all-plywood construction, resilient finishes, and soft-close, stainless-steel glides and hinges. Homeowners can expect not only enduring quality, but also exceptional value, promising years of lasting beauty at an affordable price.

Service You've Come to Expect:

Embodying our commitment to providing experienced and reliable solutions for your home, 1951 Cabinetry is known for excellent customer service. Homeowners, contractors, and distributors are seeking value-priced cabinetry without compromising on service and support. We are delighted to provide 1951 Foundations as budget friendly, high-quality cabinetry backed by the same level of service and support our customers have trusted for seven decades.

Table of Contents

Door Styles

- 6 Kota Recessed Shaker Panel (FOL)
- 8 Alor Recessed Shaker Panel (POL)

Product Specifications

- 12 An Inside Look
- 16 Wall Cabinets
- 18 Base Cabinets
- 21 Utility and Oven Cabinets
- 22 Vanity Cabinets
- 22 Accessory Items
- 25 Molding
- 26 Hardware Specifications

Overview

- 27 Parts
- 34 At a Glance
- 36 Important Information

1951TM Foundations

Timeless Door Styles

1951 Foundations introduces two door styles that are in tune with enduring trends, offered in popular finishes that strike a balance between style and affordability. These versatile doors are your canvas to create a broad spectrum of unique looks.

Painted Lily

Painted Steel



1951TM

Foundations

Kota

DOOR STYLE

Full Overlay Recessed Shaker Panel

Exuding an elegant simplicity, the full-overlay door of the Kota style embodies the timeless appeal and adaptability of Shaker design. The Lily and Steel painted finishes showcased here offer a wealth of creative possibilities, allowing you to craft a spectrum of aesthetics. Whether you're inclined towards a contemporary, modern look or yearn for the cozy charm of a farmhouse ambiance, the Kota door style stands as a superb choice, aligning perfectly with enduring design trends.



Painted Lily 90MPS



Painted Steel 90MYS



Kota Painted Steel

Features

CONSTRUCTION
Recessed Shaker Panel

DOOR DETAILS
Full Overlay

DRAWER
5-Piece

FINISHES
Painted Lily & Painted Steel



Kota Painted Lily

1951TM

Foundations

Alor

DOOR STYLE

Partial Overlay Recessed Shaker Panel

A master of adaptability, the partial-overlay door featured in the Alor style perfectly encapsulates the enduring charm and versatility of Shaker design. The showcased Lily painted finish opens the door to a treasure trove of creative options, enabling you to curate a diverse range of visual aesthetics. Alor effortlessly brings forth an air of refined elegance in a formal setting while also extending a warm, casual invitation in the cozy ambiance of a modern farmhouse retreat, presenting an exceptional choice, harmoniously aligned with the latest design trends.

www.1951Cabinetry.com/Foundations



Painted Lily

92MPS



Alor Painted Lily

Features

CONSTRUCTION
Recessed Shaker Panel

DOOR DETAILS
Partial Overlay

DRAWER
Slab

FINISHES
Painted Lily



ALOR PAINTED LILY

Product Specifications

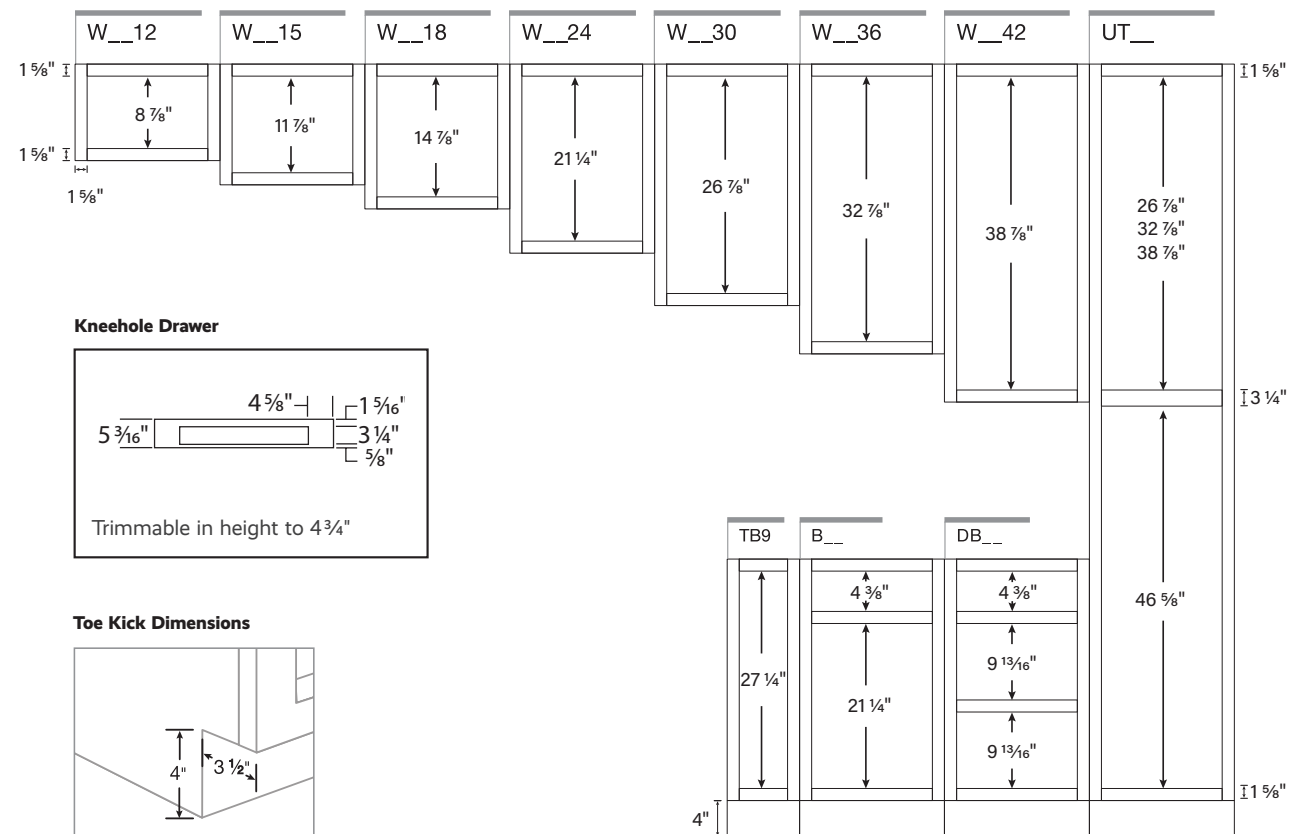
While the product selection may be modest, the potential is boundless. These budget-friendly, fashionable cabinets, boasting premium features, are guaranteed to inspire kitchens, bathrooms, and various living areas that homeowners will adore.



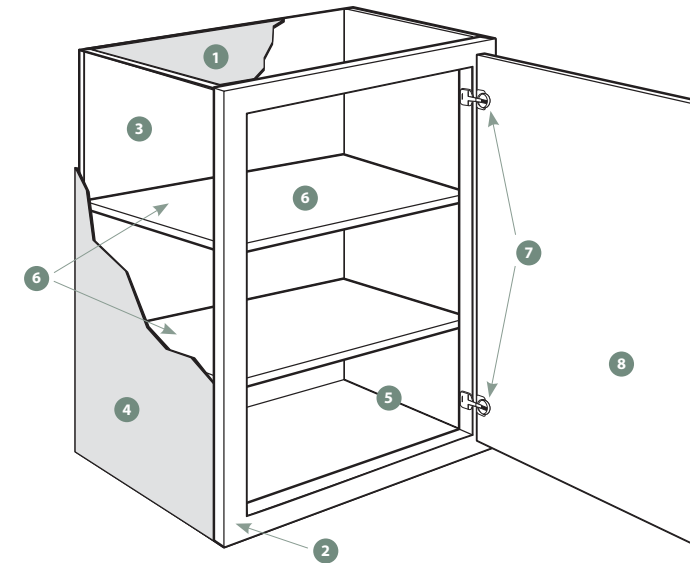
An Inside Look

Cabinet Opening Dimensions

Illustrations specify dimensions of vertical stiles and horizontal rails, inset toe kick, and standard interior opening heights. When selecting cabinetry for installation above or near any appliance, refer to the appliance manufacturer's specifications for clearance and venting requirements.

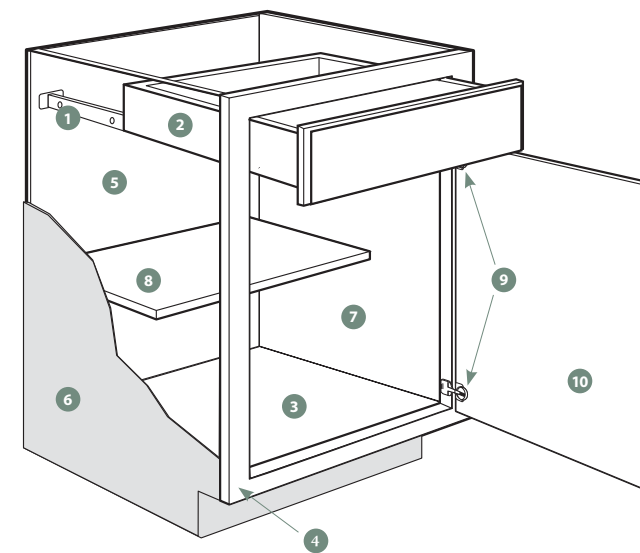


Construction Features



Wall Cabinets

- 1 **Top/Bottom Panels:** 1/2" plywood
- 2 **Face Frame:** 1 5/8" wide hardwood
- 3 **Back Panel:** 1/8" plywood
- 4 **End Panels:** 1/2" plywood exterior to match cabinet finish
- 5 **Interiors:** Finished with a natural woodgrain look
- 6 **Adjustable Shelves:** 3/4" plywood
- 7 **Hinges:** 6-way adjustable soft-close
- 8 **Door:** Reversible door on single-door cabinets for left or right opening; hinged on the left from the factory; double-door cabinets are butt doors with no center stile.



Base Cabinets

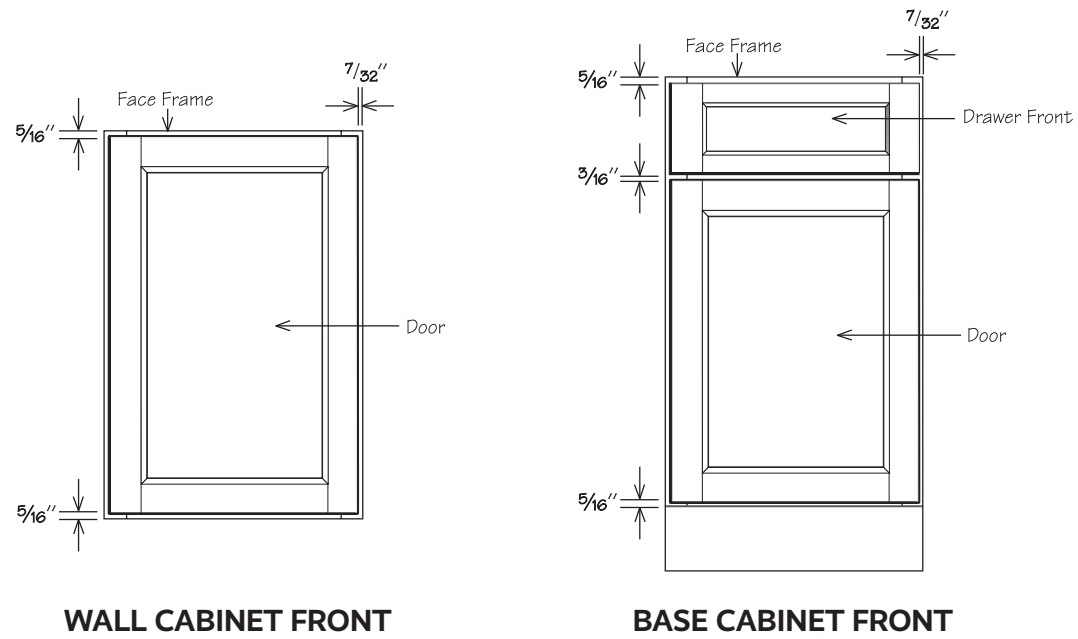
- 1 **Drawer Glides:** Full-access undermount soft close
- 2 **Drawer Box:** 5/8" hardwood dovetail box with fully encapsulated bottom
- 3 **Bottom Panels:** 1/2" plywood
- 4 **Face Frame:** 1 5/8" wide hardwood
- 5 **Back Panel:** 1/8" plywood
- 6 **End Panels:** 1/2" plywood exterior to match cabinet finish
- 7 **Interiors:** Finished with a natural woodgrain look
- 8 **Half-Depth Adjustable Shelf:** 3/4" plywood
- 9 **Hinges:** 6-way adjustable soft-close
- 10 **Door:** Reversible door on single-door cabinets for left or right opening; hinged on the left from the factory; double-door cabinets are butt doors with no center stile.



All cabinetry manufactured by 1951 FoundationsTM is certified by the Kitchen Cabinet Manufacturers Association (KCMA). 1951 FoundationsTM has received certification by KCMA Environmental Stewardship Program on all products.

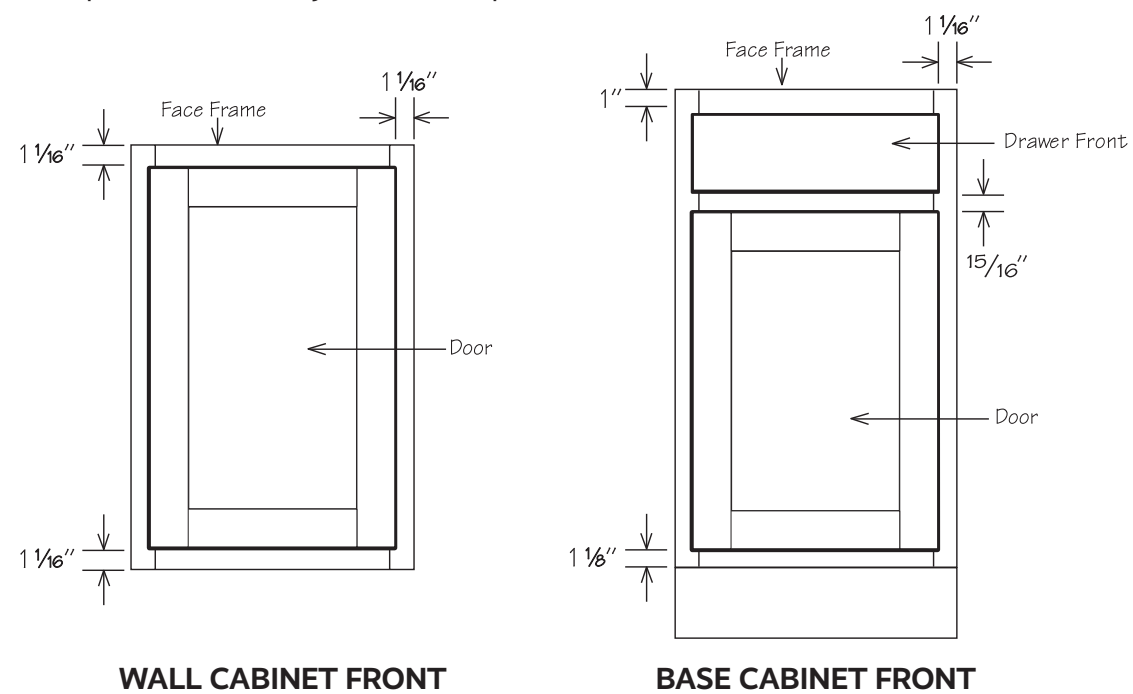
Full Overlay Dimensions

Full overlay doors are sized to cover nearly all of the cabinet face frame. Full overlay door styles require decorative hardware. To facilitate proper door operation, include at least a 1" filler between the hinged side of full overlay door styles and deeper adjacent objects including cabinets, walls, appliances and countertops.



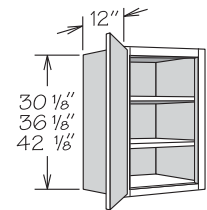
Partial Overlay Dimensions

Partial Overlay (POL) doors are sized to show about an inch of the cabinet face frame, giving the door some visual depth. Some door styles do not require decorative hardware.



Wall Cabinets SPECIFICATIONS

Wall Cabinet • 1 Door

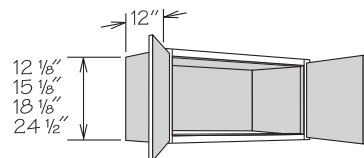


36" High Shown

- Hinged left, field reversible

30" High • 2 Shelves	36" High • 2 Shelves	42" High • 3 Shelves
W930	W936	W942
W1230	W1236	W1242
W1530	W1536	W1542
W1830	W1836	W1842
W2130	W2136	W2142

Wall Cabinet • 2 Butt Doors

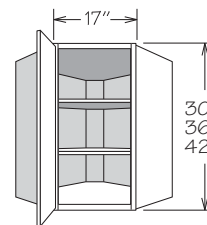


15" High Shown

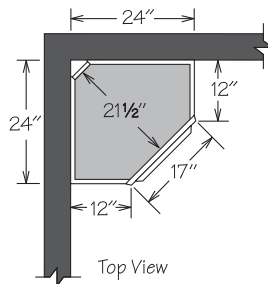
12" High • No Shelf	15" High • No Shelf	18" High • 1 Shelf
W3012 BUTT	W3015 BUTT	W3018 BUTT
W3612 BUTT	W3615 BUTT	W3618 BUTT

24" High • 1 Shelf
W3024 BUTT
W3624 BUTT

Corner Wall Cabinet



36" High Shown

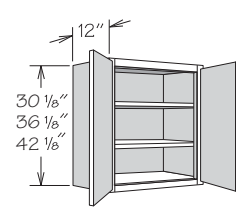


Top View

- Installs in a 24" x 24" wall area
- Hinged left, field reversible

30" High • 2 Shelves	36" High • 2 Shelves	42" High • 3 Shelves
CW2430	CW2436	CW2442

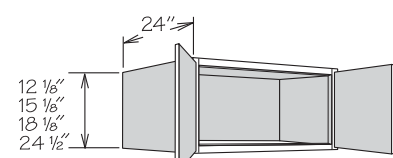
Wall Cabinet • 2 Butt Doors



36" High Shown

30" High • 2 Shelves	36" High • 2 Shelves	42" High • 3 Shelves
W2430 BUTT	W2436 BUTT	W2442 BUTT
W2730 BUTT	W2736 BUTT	W2742 BUTT
W3030 BUTT	W3036 BUTT	W3042 BUTT
W3330 BUTT	W3336 BUTT	W3342 BUTT
W3630 BUTT	W3636 BUTT	W3642 BUTT

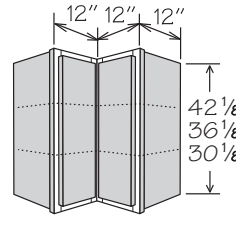
24" Deep Wall Cabinet • 2 Butt Doors



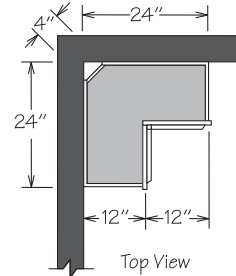
15" High Shown

- Must be attached to back wall and either cabinet or walls on both sides
- | 12" High • No Shelf | 15" High • No Shelf | 18" High • 1 Shelf |
|---------------------|---------------------|--------------------|
| W3312 X 24DP BUTT | W3315 X 24DP BUTT | W3318 X 24DP BUTT |
| W3612 X 24DP BUTT | W3615 X 24DP BUTT | W3618 X 24DP BUTT |
-
- | 24" High • 1 Shelf |
|--------------------|
| W3324 X 24DP BUTT |
| W3624 X 24DP BUTT |

Wall Easy Reach



36" High Shown



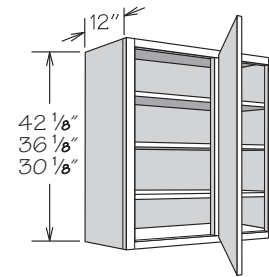
Top View

- Must be ordered as hinged left or right
- Doors open 170°
- Stile width and outside profile of both doors at door-to-door hinge may vary from standard dimension and profile for proper door function

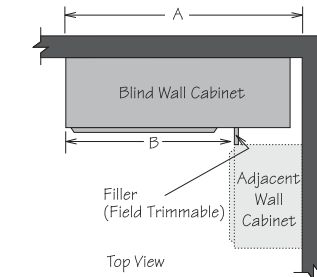
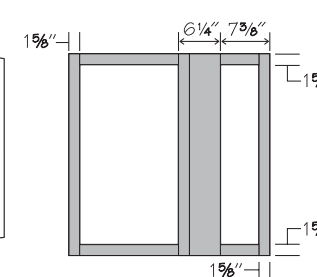
30"H • 2 Shelves	36"H • 2 Shelves	42"H • 3 Shelves
WER2430	WER2436	WER2442

Wall Cabinets SPECIFICATIONS

Blind Wall Cabinet



42" High Shown



Top View

Full Overlay Door Styles

Full Overlay door styles require decorative hardware, which has been calculated into dimensions.

CABINET	ACTUAL CABINET WIDTH	DOOR OPENING	DOOR(S)	WALL SPACE A			EXPOSED FRAME B	
				MIN. SPACE	MAX. PULL	MAX. SPACE	MIN. SPACE	MAX. SPACE
BLW30/33_	30"	14 3/4"	DR18_	32 1/4"	1 3/4"	34"	20 1/4"	22"
BLW33/36_	33"	17 3/4"	DR21_	35 1/4"	1 3/4"	37"	23 1/4"	25"

Partial Overlay Door Styles

Wall Space A requirements include optional decorative hardware clearance. 1/4" may be deducted if decorative hardware is not used.

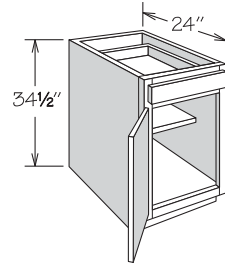
CABINET	ACTUAL CABINET WIDTH	DOOR OPENING	DOOR(S)	WALL SPACE A			EXPOSED FRAME B	
				MIN. SPACE	MAX. PULL	MAX. SPACE	MIN. SPACE	MAX. SPACE
BLW30/33_	30"	14 3/4"	DR18_	31 3/8"	2 5/8"	34"	19 3/8"	22"
BLW33/36_	33"	17 3/4"	DR21_	34 3/8"	2 5/8"	37"	22 3/8"	25"

- Cabinet shown as right indicating blind opening is on the right side of cabinet (must be ordered as left or right)
- Includes 1/8" panel to cover blind opening (field trim and install)
- Must order Universal Filler separately
- Center shelf support provided

30" High • 2 Shelves	36" High • 2 Shelves	42" High • 3 Shelves
BLW30/3330	BLW30/3336	BLW30/3342
BLW33/3630	BLW33/3636	BLW33/3642

Base Cabinets SPECIFICATIONS

Base • 1 Door and 1 Drawer

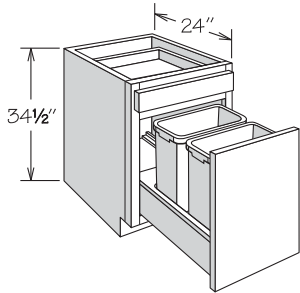


- Features full-access undermount soft-close drawer glides
- Half-depth adjustable shelf included
- Hinged left, field reversible

34 1/2" High • 1 Shelf

B12
B15
B18
B21

Base Wastebasket • 1 Door, 1 Drawer with Wastebasket Pull-Out

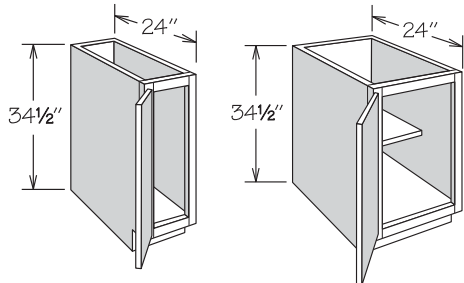


- Features full-access undermount soft-close drawer glides
- Includes two 35-quart waste baskets

34 1/2" High

BWBB18-2

Full-Height Base Cabinet • 1 Door



- Half-depth adjustable shelf included (excluding TB9)
- Hinged left, field reversible

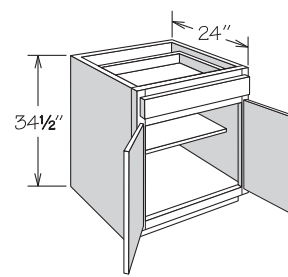
34 1/2" High • No Shelf

TB9

34 1/2" High • 1 Shelf

B12 FH
B15 FH
B18 FH
B21 FH

Base • 2 Butt Doors and 1 Drawer

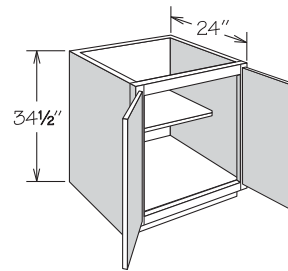


- Features full-access undermount soft-close drawer glides
- Half-depth adjustable shelf included

34 1/2" High • 1 Shelf

B24 BUTT
B27 BUTT
B30 BUTT
B33 BUTT
B36 1TD BUTT

Full-Height Base Cabinets • 2 Butt Doors

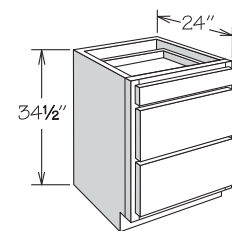


- Half-depth adjustable shelf included

34 1/2" High

B24 BUTT FH
B30 BUTT FH
B36 BUTT FH

Drawer Base Cabinet • 3 Drawers



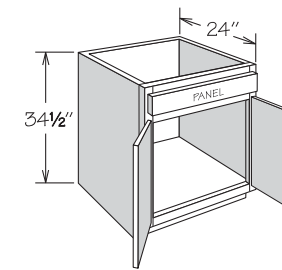
- Features full-access undermount soft-close drawer glides

34 1/2" High

DB15
DB18
DB21
DB24
DB30
DB36 1TD

Base Cabinets SPECIFICATIONS

Sink/Cooktop Base • 2 Butt Doors

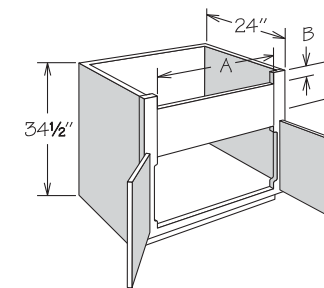


- Full-height back panel
- No shelf
- Subtract 1 1/2" from width and 1 1/8" from depth for available sink bowl opening
- Refer to sink/cooktop manufacturer's specifications for adequate clearance and required installation materials
- Touch-up kit included

34 1/2" High • No Shelf

SB24 BUTT SB33 BUTT
SB27 BUTT SB36 BUTT
SB30 BUTT

Deep Sink/Range Base • 2 Butt Doors



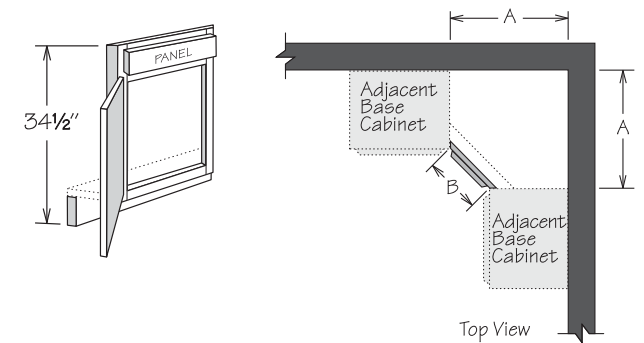
A MIN.	A MAX.	B	C MAX. FOL	C MAX. POL
29 3/4"	34"	2 7/8"	10"	10 1/2"

- 3 1/8" stiles and 9 1/4" rails are trimmable to accommodate various size apron-front sinks and cooktops
- No shelf
- Refer to sink/cooktop manufacturer's specifications for adequate clearance and required installation materials
- Touch-up kit included

34 1/2" High • No Shelf

DSB36 BUTT

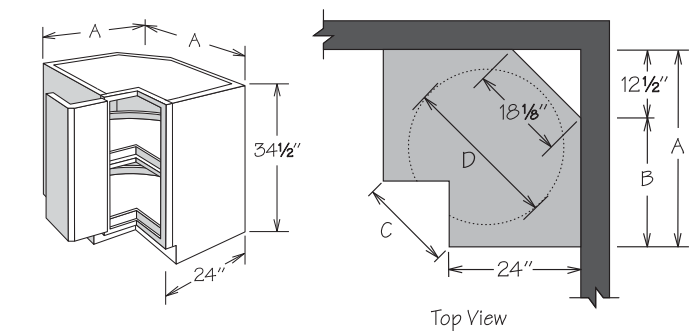
Corner Sink Front



- Vertical edges of frame are mitered to attach to adjacent cabinet frames
- Order floor and returns separately (field trimming may be required)

34 1/2" High	A	B
CSF36	35 3/32"	16 15/16"

Base Super Susan • Wood Spin Unit

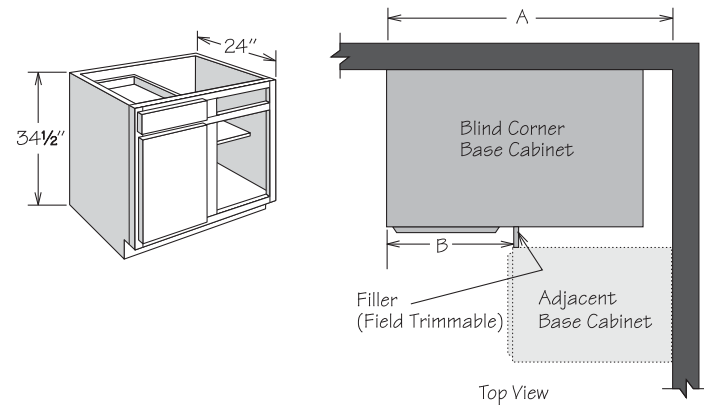


- Wood Spin Units feature:
 - » One fixed spin unit mounted on cabinet floor
 - » One spin unit attached to 3/4" adjustable shelf
 - » Natural wood finish with 1" lip
- Must be ordered hinged left or right
- Doors open 170 degrees
- Cabinet requires a minimum of 29" to fit through doorway (removal of cabinet door recommended)
- Additional space recommended if appliance is installed on the hinge side of this cabinet for proper door operation - decorative hardware should be taken into consideration for the overall depth of appliance
- Stile width and outside profile of both doors at door-to-door hinge may vary from standard dimension and profile for proper door function

34 1/2" High	A	B	C	D
BSS33L WD	33"	20 1/2"	10 7/16"	28"
BSS33R WD	33"	20 1/2"	10 7/16"	28"
BSS36L WD	36"	23 1/2"	14 5/8"	32"
BSS36R WD	36"	23 1/2"	14 5/8"	32"

Base Cabinets SPECIFICATIONS

Blind Corner Base • 1 Door and 1 Drawer



*Decorative Hardware is required and has been calculated into dimensions

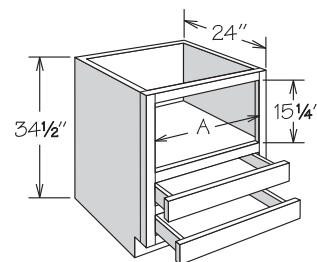
CABINET	ACTUAL CABINET WIDTH	DOOR OPENING	DOOR	WALL SPACE A					EXPOSED FRAME B		
				FOL MIN. SPACE*	POL MIN. SPACE	FOL MAX. PULL	POL MAX. PULL	MAX. SPACE	FOL MIN. SPACE*	POL MIN. SPACE*	MAX. SPACE
BLB36/39	27"	8 3/4"	DR1224	38 1/4"	37 3/8"	1 3/4"	2 5/8"	40"	14 1/4"	13 3/8"	16"
BLB39/42	33"	11 3/4"	DR1524	41 1/4"	40 3/8"	1 3/4"	2 5/8"	43"	17 1/4"	16 3/8"	19"
BLB42/45	39"	14 3/4"	DR1824	44 1/4"	43 3/8"	1 3/4"	2 5/8"	46"	20 1/4"	19 3/8"	22"
BLB45/48	45"	17 3/4"	DR2124	47 1/4"	46 3/8"	1 3/4"	2 5/8"	49"	23 1/4"	22 3/8"	25"

- Half-depth adjustable shelf included
- Features full-access undermount soft-close drawer glides
- Blind base door and drawer are installed in the left section
- Door and drawer can be reversed in the field, as blind sections are identical
- Refer to the chart for specifications
- Must order filler separately

34 1/2" High • 1 Shelf

BLB36/39
BLB39/42
BLB42/45
BLB45/48

Base Microwave Cabinet • 2 Drawers



- Microwave opening finished to match
- Designed to accommodate countertop style microwave
- Features two standard depth drawers
- Refer to appliance manufacturer's specifications for adequate clearances

34 1/2" High

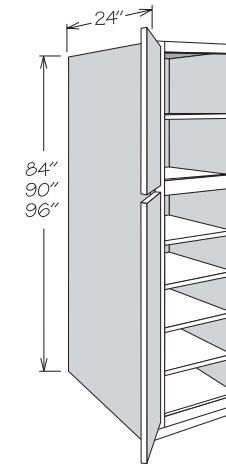
BMC27

A

23 3/4"

Utility Cabinets SPECIFICATIONS

Utility Cabinet • 2 Doors



84" High Shown

- 96" high has removable toe kick that is field installed
- Upper door lines up with 30", 36", and 42" high wall cabinets
- Shelves ship separately for field installation

84" High • 5 Shelves

UT1824 X 84 AS

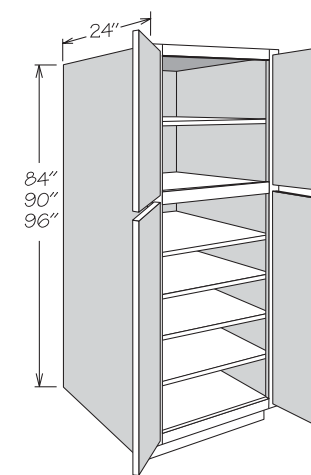
90" High • 6 Shelves

UT1824 X 90 AS

96" High • 7 Shelves

UT1824 X 96 AS

Utility Cabinet • 4 Butt Doors



84" High Shown

- 96" high has removable toe kick that is field installed
- Upper door lines up with 30", 36", and 42" high wall cabinets
- Shelves ship separately for field installation

84" High • 5 Shelves

UT2424 X 84 AS BUTT
UT3024 X 84 AS BUTT

90" High • 6 Shelves

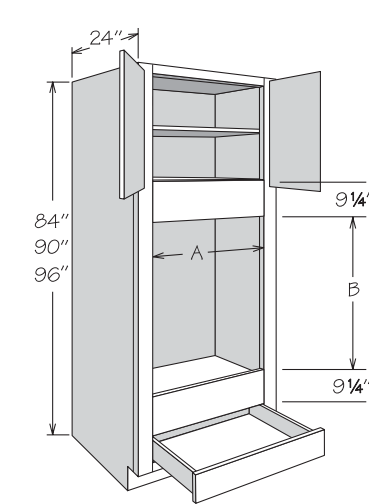
UT2424 X 90 AS BUTT
UT3024 X 90 AS BUTT

96" High • 7 Shelves

UT2424 X 96 AS BUTT
UT3024 X 96 AS BUTT

Oven Cabinets SPECIFICATIONS

Double Oven Cabinet • 2 Butt Doors and 1 Drawer



90" High Shown

- 96" high has removable toe kick that is field installed
- 3 1/8" stiles and 9 1/4" rails around oven opening are trimmable
- Refer to appliance manufacturer's specifications for adequate clearances and required installation materials

84" High • No Shelf

OVD3384 BUTT

90" High • 1 Shelf

OVD3390 AS BUTT

96" High • 2 Shelves

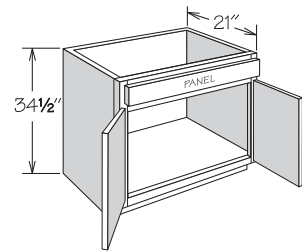
OVD3396 AS BUTT

CABINET	A MIN.	A MAX.	B MIN.	B MAX.	B MAX. (Drawer Removed*)
OVD3384 BUTT	26 3/4"	31"	39"	54 1/4"	60 1/4"
OVD3390 AS BUTT	26 3/4"	31"	38 5/8"	53 7/8"	59 7/8"
OVD3396 AS BUTT	26 3/4"	31"	39"	54 1/4"	60 1/4"

*Maximum height includes removing drawer unit and frame horizontal

Vanity Cabinets SPECIFICATIONS

Vanity Sink Base • 2 Butt Doors and 1 Drawer Panel

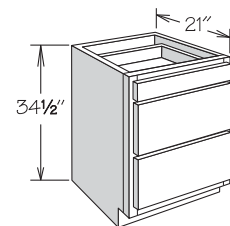


- Subtract 1 1/2" from width and 1 1/8" from depth for available sink bowl opening
- Refer to sink manufacturer's specifications for adequate clearance and required installation materials

34 1/2" High • No Shelf

VSB2434H BUTT
VSB2734H BUTT
VSB3034H BUTT
VSB3334H BUTT
VSB3634H BUTT

Vanity Drawer Base • 3 Drawers

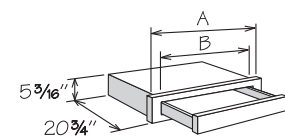


- Features full-access undermount soft-close drawer glides

34 1/2" High

VDB1234H
VDB1534H
VDB1834H

Kneehole Drawer Cabinet

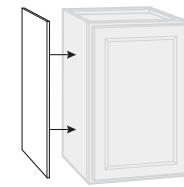


- Field Trimmable in Height to 4 3/4"

	A	B	Max. Trim
KDC33/27	33"	23 3/4"	27" (3" each side)

Accessory Items SPECIFICATIONS

End Panel



- Exterior finished to match
- Wall panels are 11 1/4" deep x 42 1/8" high x 3/4" thick
- Base panels are 23 1/4" deep x 34 1/2" high x 3/4" thick
- Tall panels are 23 1/4" deep x 96" high x 3/4" thick
- Finished panels are 96" wide x 34 1/2" high x 3/4" thick

Wall Panel

WEP42

Base Panel

BEP34

Finished Panel

FP9634

Tall Panel

TEP96

Wood Panel



- Engineered wood
- Both sides finished to match
- Wood panels (WP9648) is 96" wide x 48" high and 3/4" thick
- Deep wood panels (DWTEP96) is 32" wide x 96" high and 3/4" thick
- Wood tall panels (WTEP96) is 96" wide x 48" high and 3/4" thick

Deep Wood Tall Panel

DWTEP96

Wood Panel

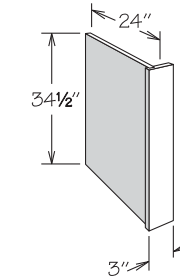
WP9648

Wood Tall Panel

WTEP96

Accessory Items SPECIFICATIONS

Dishwasher Return • 1/2" Panel

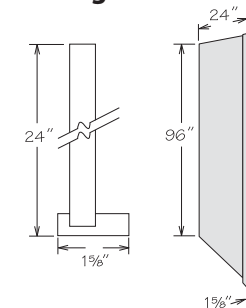


- Reversible for left or right installation
- Exterior finished to match
- Front filler can be trimmed to a minimum of 1" wide
- Can be notched for toe kick in the field
- Wall attachment block included

34 1/2" High

DWR3

Refrigerator Return • 1/2" Panel

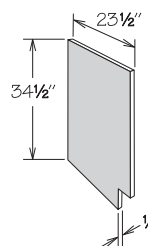


- Reversible for left or right installation
- Exterior finished to match
- Front filler can be trimmed to a minimum of 1" wide
- Field trimmable in height, can be notched for toe kick

96" High

RR96

Sink/Vanity Front Return

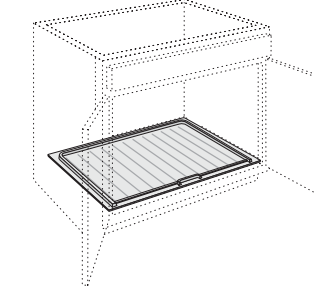


- Features 1/2" engineered wood
- Outside finished to match
- Specify left or right
- Attaching blocks included
- Field trimmable

SFRR

SFRL

Sink Base Mat



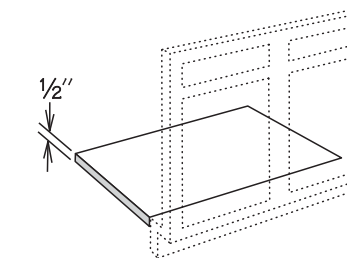
- Field installation accessory
- Designed to funnel any leaks or spills out the front of the cabinet while protecting the cabinet floor
- Features flexible material in gray finish - easily trimmable
- Minor field trimming required for use in Deep Sink Base cabinets

SBMAT30

SBMAT33

SBMAT36

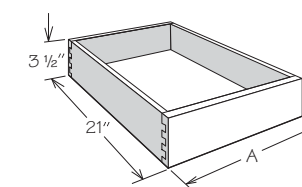
Sink Front Floor



- Features 1/2" engineered wood
- For use for CSF36 (field trim to fit)
- Field trimmable

FL48X48

Roll Out Tray Kit

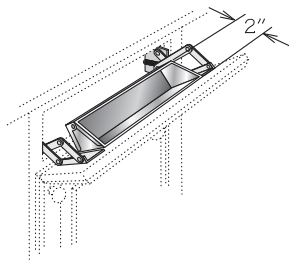


- Field installed accessory
- Kit includes roll out tray and all hardware
- Features dovetail drawer with full-access undermount soft-close drawer glides
- Glides ship unattached for field installation
- DROT drill template is required for all two door cabinets that have a center stile - contact the Partner Team for drill template

	A	A	
DROT15	10 3/4"	DROT27	22 3/4"
DROT18	13 3/4"	DROT30	25 3/4"
DROT21	16 3/4"	DROT33	28 3/4"
DROT24	19 3/4"	DROT36	31 3/4"

Accessory Items SPECIFICATIONS

Tilt Out Tray Kit

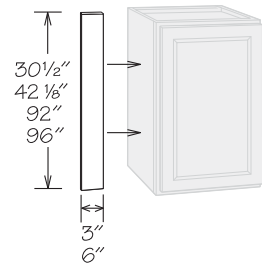


- Field installation accessory
- Kit features tray and one pair of scissor hinges
- Order units individually
- STO TRAY 22:
 - » Order one unit for SB30, SB33 or SB36
- Sink front units match sink base sizes as noted above
- Tilt-Out Trays are NOT dishwasher safe

Stainless

STO TRAY 22

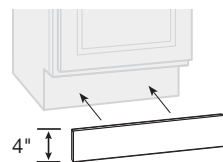
Wall & Base Fillers



- UF__ are 3/4" solid wood and finished on front, both long edges and one short edge
- S3S__ are 3/4" solid wood and finished on front and all four edges

3" Filler	Height	6" Filler	Height
UF3	30 1/2"	UF6	30 1/2"
UF342	42 1/8"	UF642	42 1/8"
UF392	92"	UF692	92"
S3S396	96"	S3S696	96"

Toe Kick

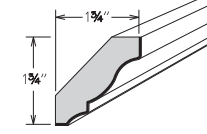


- 94" long

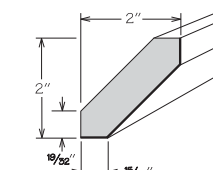
BTK8

Moldings SPECIFICATIONS

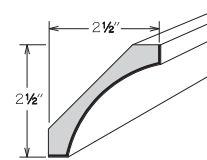
Crown Molding



TRADITIONAL CROWN



ANGLED CROWN



COVE CROWN

- 94" long
- Bold line in illustration indicates finished surfaces

Traditional Crown

CM8

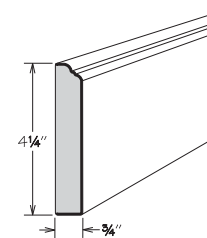
Angled Crown

ACM8

Cove Crown

SCVM8

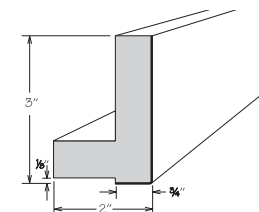
Ogee Pilaster Molding



- 94" long
- For use with furniture toe or top molding applications
- Bold line in illustration indicates finished surfaces

OGP8

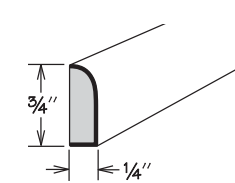
Starter Molding



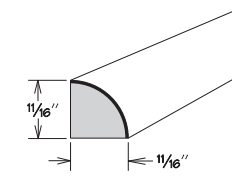
- 94" long
- Bold line in illustration indicates finished surfaces

STRM8

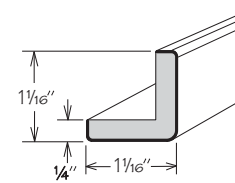
Trim Molding



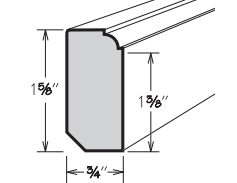
SCRIBE



QUARTER ROUND



OUTSIDE CORNER



DECORATIVE TRIM

- 94" long
- DCTM8 can be used as light rail molding (cleating required)
- Bold line in illustration indicates finished surfaces

Scribe

SM8

Quarter Round

QR8

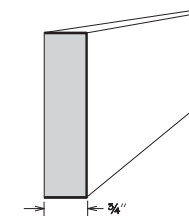
Outside Corner

OTCM8

Decorative Trim

DCTM8

Solid Stock



- 96" long
- May also be used in vertical applications (as a filler) or horizontal applications (as furniture toe)
- Bold line in illustration indicates finished surfaces

3" High

S3S396

6" High

S3S696

Hardware SPECIFICATIONS

1951 Foundations does not recommend drilling through any door/drawer joint for installation of decorative hardware. Door and drawer fronts must be adjusted before installing decorative hardware.

Halo Knobs



Satin Nickel
KNOB 3106SN



Matte Black
KNOB 3106MB

Bow Pulls



Satin Nickel
PULL 3128SN



Matte Black
PULL 3128MB

Classic Knobs



Satin Nickel
KNOB 3173SN



Matte Black
KNOB 3173MB

T-Bar Pulls - 5 5/16"



Satin Nickel
PULL 4701SN



Matte Black
PULL 4701MB

Tempo Knobs



Satin Nickel
KNOB 0322SN



Matte Black
KNOB 0322MB

Parts SPECIFICATIONS

SKU	QTY	DOOR		ADJUSTABLE SHELF	
		PART NAME	QTY	PART NAME	QTY
WALL CABINET - 12" HIGH					
W3012 BUTT	2	DR1512 BUTT	-	N/A	
W3612 BUTT	2	DR1812 BUTT	-	N/A	
WALL CABINET - 15" HIGH					
W3015 BUTT	2	DR1515 BUTT	-	N/A	
W3615 BUTT	2	DR1815 BUTT	-	N/A	
WALL CABINET - 18" HIGH					
W3018 BUTT	2	DR1518 BUTT	1	30" SHELF PLY	
W3618 BUTT	2	DR1818 BUTT	1	36" SHELF PLY	
WALL CABINET - 24" HIGH					
W3024 BUTT	2	DR1524 BUTT	1	30" SHELF PLY	
W3624 BUTT	2	DR1824 BUTT	1	36" SHELF PLY	
WALL CABINET - 30" HIGH					
W930	1	DR930	2	9" SHELF PLY	
W1230	1	DR1230	2	12" SHELF PLY	
W1530	1	DR1530	2	15" SHELF PLY	
W1830	1	DR1830	2	18" SHELF PLY	
W2130	1	DR2130	2	21" SHELF PLY	
W2430 BUTT	2	DR1230 BUTT	2	24" SHELF PLY	
W2730 BUTT	2	DR1330 BUTT	2	27" SHELF PLY	
W3030 BUTT	2	DR1530 BUTT	2	30" SHELF PLY	
W3330 BUTT	2	DR1630 BUTT	2	33" SHELF PLY	
W3630 BUTT	2	DR1830 BUTT	2	36" SHELF PLY	
WALL CABINET - 36" HIGH					
W936	1	DR936	2	9" SHELF PLY	
W1236	1	DR1236	2	12" SHELF PLY	
W1536	1	DR1536	2	15" SHELF PLY	
W1836	1	DR1836	2	18" SHELF PLY	
W2136	1	DR2136	2	21" SHELF PLY	
W2436 BUTT	2	DR1236 BUTT	2	24" SHELF PLY	
W2736 BUTT	2	DR1336 BUTT	2	27" SHELF PLY	
W3036 BUTT	2	DR1536 BUTT	2	30" SHELF PLY	
W3336 BUTT	2	DR1636 BUTT	2	33" SHELF PLY	
W3636 BUTT	2	DR1836 BUTT	2	36" SHELF PLY	
WALL CABINET - 42" HIGH					
W942	1	DR942	3	9" SHELF PLY	
W1242	1	DR1242	3	12" SHELF PLY	
W1542	1	DR1542	3	15" SHELF PLY	
W1842	1	DR1842	3	18" SHELF PLY	
W2142	1	DR2142	3	21" SHELF PLY	
W2442 BUTT	2	DR1242 BUTT	3	24" SHELF PLY	
W2742 BUTT	2	DR1342 BUTT	3	27" SHELF PLY	
W3042 BUTT	2	DR1542 BUTT	3	30" SHELF PLY	
W3342 BUTT	2	DR1642 BUTT	3	33" SHELF PLY	
W3642 BUTT	2	DR1842 BUTT	3	36" SHELF PLY	

Parts SPECIFICATIONS

SKU	QTY	DOOR		ADJUSTABLE SHELF	
		PART NAME	QTY	PART NAME	QTY
BLIND WALL CABINET					
BLW30/3330	1	DR1830	2	30" SHELF PLY	
BLW33/3630	1	DR2130	2	33" SHELF PLY	
BLW30/3336	1	DR1836	2	30" SHELF PLY	
BLW33/3636	1	DR2136	2	33" SHELF PLY	
BLW30/3342	1	DR1842	3	30" SHELF PLY	
BLW33/3642	1	DR2142	3	33" SHELF PLY	
WALL EASY REACH					
WER2430	1	DR1230 WER DRILL	2	WER SHELF PLY	
	1	DR1230 WER ND			
WER2436	1	DR1236 WER DRILL	2	WER SHELF PLY	
	1	DR1236 WER ND			
WER2442	1	DR1242 WER DRILL	3	WER SHELF PLY	
	1	DR1242 WER ND			
CORNER WALL CABINETS					
CW2430	1	DR1530	2	CW SHELF ADJ PLY	
CW2436	1	DR1536	2	CW SHELF ADJ PLY	
CW2442	1	DR1542	3	CW SHELF ADJ PLY	
REFRIGERATOR WALL CABINETS - 12" HIGH					
W3312 X 24 DP BUTT	2	DR1612 BUTT	-	N/A	
W3612 X 24 DP BUTT	2	DR1812 BUTT	-	N/A	
REFRIGERATOR WALL CABINETS - 15" HIGH					
W3315 X 24 DP BUTT	2	DR1615 BUTT	-	N/A	
W3615 X 24 DP BUTT	2	DR1815 BUTT	-	N/A	
REFRIGERATOR WALL CABINETS - 18" HIGH					
W3318 X 24 DP BUTT	2	DR1618 BUTT	1	33" SHELF 24DP PLY	
W3618 X 24 DP BUTT	2	DR1818 BUTT	1	36" SHELF 24DP PLY	
REFRIGERATOR WALL CABINETS - 24" HIGH					
W3324 X 24 DP BUTT	2	DR1624 BUTT	1	33" SHELF 24DP PLY	
W3624 X 24 DP BUTT	2	DR1824 BUTT	1	36" SHELF 24DP PLY	
UTILITY CABINET - WITH ADJUSTABLE SHELVES - 24" DEEP X 84" HIGH					
UT1824 X 84 AS	1	DR1830	5	S1824	
	1	DR1850			
UT2424 X 84 AS BUTT	2	DR1230 BUTT	5	S2424	
	2	DR1250 BUTT			
UT3024 X 84 AS BUTT	2	DR1530 BUTT	5	S3024	
	2	DR1550 BUTT			
UTILITY CABINET - WITH ADJUSTABLE SHELVES - 24" DEEP X 90" HIGH					
UT1824 X 90 AS	1	DR1836	6	S1824	
	1	DR1850			
UT2424 X 90 AS BUTT	2	DR1236 BUTT	6	S2424	
	2	DR1250 BUTT			
UT3024 X 90 AS BUTT	2	DR1536 BUTT	6	S3024	
	2	DR1550 BUTT			

Parts SPECIFICATIONS

SKU	QTY	DOOR		ADJUSTABLE SHELF	
		PART NAME	QTY	PART NAME	QTY
UTILITY CABINET - WITH ADJUSTABLE SHELVES - 24" DEEP X 96" HIGH					
UT1824 X 96 AS	1	DR1842	7	S1824	
	1	DR1850			
UT2424 X 96 AS BUTT	2	DR1242 BUTT	7	S2424	
	2	DR1250 BUTT			
UT3024 X 96 AS BUTT	2	DR1542 BUTT	7	S3024	
	2	DR1550 BUTT			
SKU	QTY	DOOR		QTY	ADJUSTABLE SHELF
		FULL OVERLAY	PARTIAL OVERLAY		
		PART NAME	PART NAME		
FULL-HEIGHT BASE					
T89	1	DR9FH	DR930	-	N/A
B12 FH	1	DR12FH	DR1230	1	12" SHELF PLY
B15 FH	1	DR15FH	DR1530	1	15" SHELF PLY
B18 FH	1	DR18FH	DR1830	1	18" SHELF PLY
B21 FH	1	DR21FH	DR2130	1	21" SHELF PLY
B24 BUTT FH	2	DR12BUTT FH	DR1230 BUTT	1	24" SHELF PLY
B30 BUTT FH	2	DR15BUTT FH	DR1530 BUTT	1	30" SHELF PLY
B36 BUTT FH	2	DR18BUTT FH	DR1830 BUTT	1	36" SHELF PLY
SKU	QTY	DRAWER FRONT/PANEL		DRAWER BODY	
		FULL OVERLAY	PARTIAL OVERLAY		
		PART NAME	PART NAME	PART NAME	
KNEEHOLE DRAWER CABINET					
KDC33/27	1	DDFKDC33/27	DDFKDC33/27		DRBKDC33X 15DP DT FD
THREE DRAWER BASE CABINET					
DB15	1	DDF15	DDF15		DRB15 X 21DP DT FD
	2	DDF15M	DDF15D		DRB15M X 21DP DT FD
DB18	1	DDF18	DDF18		DRB18 X 21DP DT FD
	2	DDF18M	DDF18D		DRB18M X 21DP DT FD
DB21	1	DDF21	DDF21		DRB21 X 21DP DT FD
	2	DDF21M	DDF21D		DRB21M X 21DP DT FD
DB24	1	DDF24	DDF24		DRB24 X 21DP DT FD
	2	DDF24M	DDF24D		DRB24M X 21DP DT FD
DB30	1	DDF30	DDF30		DRB30 X 21DP DT FD
	2	DDF30M	DDF30D		DRB30M X 21DP DT FD
DB36 1TD	1	DDF36	DDF36		DRB36 X 21DP DT FD
	2	DDF36M	DDF36D		DRB36M X 21DP DT FD
VANITY DRAWER BASE					
VDB1234H	1	DDF12	DDF12		DRB12 X 18DP DT FD
	2	DDF12M	DDF12D		DRB12M X 18DP DT FD
VDB1534H	1	DDF15	DDF15		DRB15 X 18DP DT FD
	2	DDF15M	DDF15D		DRB15M X 18DP DT FD
VDB1834H	1	DDF18	DDF18		DRB18 X 18DP DT FD
	2	DDF18M	DDF18D		DRB18M X 18DP DT FD

Parts SPECIFICATIONS

SKU	QTY	DOOR		ADJUSTABLE SHELF/ACCESSORY		DRAWER FRONT/PANEL		DRAWER BODY
		PART NAME	QTY	PART NAME	QTY	FULL OVERLAY	PARTIAL OVERLAY	PART NAME
						PART NAME	PART NAME	
BASE CABINET - ADJUSTABLE SHELF								
B12	1	DR1224	1	12" SHELF PLY	1	DDF12	DDF12	DRB12 X 21DP DT FD
B15	1	DR1524	1	15" SHELF PLY	1	DDF15	DDF15	DRB15 X 21DP DT FD
B18	1	DR1824	1	18" SHELF PLY	1	DDF18	DDF18	DRB18 X 21DP DT FD
B21	1	DR2124	1	21" SHELF PLY	1	DDF21	DDF21	DRB21 X 21DP DT FD
B24 BUTT	2	DR1224 BUTT	1	24" SHELF PLY	1	DDF24	DDF24	DRB24 X 21DP DT FD
B27 BUTT	2	DR1324 BUTT	1	27" SHELF PLY	1	DDF27	DDF27	DRB27 X 21DP DT FD
B30 BUTT	2	DR1524 BUTT	1	30" SHELF PLY	1	DDF30	DDF30	DRB30 X 21DP DT FD
B33 BUTT	2	DR1624 BUTT	1	33" SHELF PLY	1	DDF33	DDF33	DRB33 X 21DP DT FD
B36 1TD BUTT	2	DR1824 BUTT	1	36" SHELF PLY	1	DDF36	DDF36	DRB36 X 21DP DT FD
BASE CABINET - BOTTOM MOUNT WASTEBASKETS								
BWB818-2	1	DR1824 ND	1	BWB818-2_OL KIT	1	DDF18	DDF18	DRB18 X 21DP DT FD
BASE MICROWAVE CABINET								
BMC27	-	-	-	-	2	DDF27	DDF27	DRB27 X 21DP DT FD
BLIND CORNER BASE CABINET								
BLB36/39	1	DR1224	1	27" SHELF PLY	1	DDF12	DDF12	DRB12 X 21DP DT FD
BLB39/42	1	DR1524	1	33" SHELF PLY	1	DDF15	DDF15	DRB15 X 21DP DT FD
BLB42/45	1	DR1824	1	39" SHELF PLY	1	DDF18	DDF18	DRB18 X 21DP DT FD
BLB45/48	1	DR2124	1	45" SHELF PLY	1	DDF21	DDF21	DRB21 X 21DP DT FD
BASE SUPER SUSAN CABINET								
BSS33 (L/R) WD	1	DR930 BER DRILL	2	BSS33 SHLF WD NP PLY	-	N/A	N/A	N/A
	1	DR930 BER ND						
BSS36 (L/R) WD	1	DR1230 BER DRILL	2	BSS36 SHLF WD NP PLY	-	N/A	N/A	N/A
	1	DR1230 BER ND						
DOUBLE OVEN CABINET								
OVD3384 BUTT	2	DR1618 BUTT	-	N/A	1	DDFOV33	DDF33	DRB33 X 21DP DT FD
OVD3390 AS BUTT	2	DR1624 BUTT	1	S3324	1	DDFOV33	DDF33	DRB33 X 21DP DT FD
OVD3396 AS BUTT	2	DR1630 BUTT	2	S3324	1	DDFOV33	DDF33	DRB33 X 21DP DT FD

SKU	QTY	DOOR		DRAWER / PANEL FRONT	
		PART NAME	QTY	PART NAME	PART NAME
DEEP SINK BASE CABINET					
DSB36 BUTT	2	DR1821V BUTT	-	N/A	
SINK/COOKTOP BASE CABINET					
SB24 BUTT	2	DR1224 BUTT	1	DDF24	
SB27 BUTT	2	DR1324 BUTT	1	DDF27	
SB30 BUTT	2	DR1524 BUTT	1	DDF30	
SB33 BUTT	2	DR1624 BUTT	1	DDF33	
SB36 BUTT	2	DR1824 BUTT	1	DDF36	
CORNER SINK FRONT					
CSF36	1	DR1524	1	DDF15	
VANITY SINK BASE - 34 1/2" HIGH					
VSB2434H BUTT	2	DR1224 BUTT	1	DDF24	
VSB2734H BUTT	2	DR1324 BUTT	1	DDF27	
VSB3034H BUTT	2	DR1524 BUTT	1	DDF30	
VSB3334H BUTT	2	DR1624 BUTT	1	DDF33	
VSB3634H BUTT	2	DR1824 BUTT	1	DDF36	

Parts SPECIFICATIONS

DOOR DIMENSIONS		
PART NAME	DIMENSION (FOL)	DIMENSION (POL)
50" HIGH		
DR1250 BUTT	11 23/32" x 49 1/4"	10 15/16" x 47 3/4"
DR1550 BUTT	14 23/32" x 49 1/4"	13 15/16" x 47 3/4"
DR1850	17 9/16" x 49 1/4"	15 7/8" x 47 3/4"
42" HIGH		
DR942	8 9/16" x 41 1/2"	6 7/8" x 40"
DR1242	11 9/16" x 41 1/2"	9 7/8" x 40"
DR1242 BUTT	11 23/32" x 41 1/2"	10 15/16" x 40"
DR1242 WER DRILL	10 3/4" x 41 1/2"	10" x 40"
DR1242 WER ND	10 3/4" x 41 1/2"	10" x 40"
DR1342 BUTT	13 7/32" x 41 1/2"	12 7/16" x 40"
DR1542	14 9/16" x 41 1/2"	12 7/8" x 40"
DR1542 BUTT	14 23/32" x 41 1/2"	13 15/16" x 40"
DR1642 BUTT	16 7/32" x 41 1/2"	15 7/16" x 40"
DR1842	17 9/16" x 41 1/2"	15 7/8" x 40"
DR1842 BUTT	17 23/32" x 41 1/2"	16 15/16" x 40"
DR2142	20 9/16" x 41 1/2"	18 7/8" x 40"
36" HIGH		
DR936	8 9/16" x 35 1/2"	6 7/8" x 34"
DR1236	11 9/16" x 35 1/2"	9 7/8" x 34"
DR1236 BUTT	11 23/32" x 35 1/2"	10 15/16" x 34"
DR1236 WER DRILL	10 3/4" x 35 1/2"	10" x 34"
DR1236 WER ND	10 3/4" x 35 1/2"	10" x 34"
DR1336 BUTT	13 7/32" x 35 1/2"	12 7/16" x 34"
DR1536	14 9/16" x 35 1/2"	12 7/8" x 34"
DR1536 BUTT	14 23/32" x 35 1/2"	13 15/16" x 34"
DR1636 BUTT	16 7/32" x 35 1/2"	15 7/16" x 34"
DR1836	17 9/16" x 35 1/2"	15 7/8" x 34"
DR1836 BUTT	17 23/32" x 35 1/2"	16 15/16" x 34"
DR2136	20 9/16" x 35 1/2"	18 7/8" x 34"
30" HIGH		
DR930	8 9/16" x 29 1/2"	6 7/8" x 28"
DR930 BER DRILL	7 3/4" x 29 7/8"	7" x 28"
DR930 BER ND	7 3/4" x 29 7/8"	7" x 28"
DR1230	11 9/16" x 29 1/2"	9 7/8" x 28"
DR1230 BER DRILL	10 3/4" x 29 7/8"	10" x 28"
DR1230 BER ND	10 3/4" x 29 7/8"	10" x 28"
DR1230 BUTT	11 23/32" x 29 1/2"	10 15/16" x 28"
DR1230 WER DRILL	10 3/4" x 29 1/2"	10" x 28"
DR1230 WER ND	10 3/4" x 29 1/2"	10" x 28"
DR1330 BUTT	13 7/32" x 29 1/2"	12 7/16" x 28"
DR1530	14 9/16" x 29 1/2"	12 7/8" x 28"
DR1530 BUTT	14 23/32" x 29 1/2"	13 15/16" x 28"
DR1630 BUTT	16 7/32" x 29 1/2"	15 7/16" x 28"
DR1830	17 9/16" x 29 1/2"	15 7/8" x 28"
DR1830 BUTT	17 23/32" x 29 1/2"	16 15/16" x 28"
DR2130	20 9/16" x 29 1/2"	18 7/8" x 28"

DOOR DIMENSIONS		
PART NAME	DIMENSION (FOL)	DIMENSION (POL)
24" HIGH		
DR1224	11 9/16" x 23 7/8"	9 7/8" x 22 1/4"
DR1224 BUTT	11 23/32" x 23 7/8"	10 15/16" x 22 1/4"
DR1324 BUTT	13 7/32" x 23 7/8"	12 7/16" x 22 1/4"
DR1524	14 9/16" x 23 7/8"	12 7/8" x 22 1/4"
DR1524 BUTT	14 23/32" x 23 7/8"	13 15/16" x 22 1/4"
DR1624 BUTT	16 7/32" x 23 7/8"	15 7/16" x 22 1/4"
DR1824	17 9/16" x 23 7/8"	15 7/8" x 22 1/4"
DR1824 ND	17 9/16" x 23 7/8"	15 7/8" x 22 1/4"
DR1824 BUTT	17 23/32" x 23 7/8"	16 15/16" x 22 1/4"
DR2124	20 9/16" x 23 7/8"	18 7/8" x 22 1/4"
21" HIGH		
DR1821V BUTT	17 23/32" x 20"	16 15/16" x 18 1/2"
18" HIGH		
DR1518 BUTT	14 23/32" x 17 1/2"	13 15/16" x 16"
DR1618 BUTT	16 7/32" x 17 1/2"	15 7/16" x 16"
DR1818 BUTT	17 23/32" x 17 1/2"	16 15/16" x 16"
15" HIGH		
DR1515 BUTT	14 23/32" x 14 1/2"	13 15/16" x 13"
DR1615 BUTT	16 7/32" x 14 1/2"	15 7/16" x 13"
DR1815 BUTT	17 23/32" x 14 1/2"	16 15/16" x 13"
12" HIGH		
DR1512 BUTT	14 23/32" x 11 1/2"	13 15/16" x 10"
DR1612 BUTT	16 7/32" x 11 1/2"	15 7/16" x 10"
DR1812 BUTT	17 23/32" x 11 1/2"	16 15/16" x 10"
FULL-HEIGHT DOORS		
DR9FH	8 9/16" x 29 7/8"	-
DR12BUTT FH	11 23/32" x 29 7/8"	-
DR12FH	11 9/16" x 29 7/8"	-
DR15BUTT FH	14 23/32" x 29 7/8"	-
DR15FH	14 9/16" x 29 7/8"	-
DR18BUTT FH	17 23/32" x 29 7/8"	-
DR18FH	17 9/16" x 29 7/8"	-
DR21FH	20 9/16" x 29 7/8"	-

DRAWER BODY DIMENSIONS	
PART NAME	DIMENSION
STANDARD DRAWER FRONT	
21" DEEP	
DRB12 X 21DP DT FD	8 1/16" x 21" x 3 1/2"
DRB15 X 21DP DT FD	11 1/16" x 21" x 3 1/2"
DRB18 X 21DP DT FD	14 1/16" x 21" x 3 1/2"
DRB21 X 21DP DT FD	17 1/16" x 21" x 3 1/2"
DRB24 X 21DP DT FD	20 1/16" x 21" x 3 1/2"
DRB27 X 21DP DT FD	23 1/16" x 21" x 3 1/2"
DRB30 X 21DP DT FD	26 1/16" x 21" x 3 1/2"
DRB33 X 21DP DT FD	29 1/16" x 21" x 3 1/2"
DRB36 X 21DP DT FD	32 1/16" x 21" x 3 1/2"
18" DEEP	
DRB12 X 18DP DT FD	8 1/16" x 18" x 3 1/2"
DRB15 X 18DP DT FD	11 1/16" x 18" x 3 1/2"
DRB18 X 18DP DT FD	14 1/16" x 18" x 3 1/2"

Parts SPECIFICATIONS

DRAWER BODY DIMENSIONS	
PART NAME	DIMENSION
LARGE DRAWERS	
21" DEEP	
DRB15M X 21DP DT FD	11 1/16" x 21" x 7"
DRB18M X 21DP DT FD	14 1/16" x 21" x 7"
DRB21M X 21DP DT FD	17 1/16" x 21" x 7"
DRB24M X 21DP DT FD	20 1/16" x 21" x 7"
DRB30M X 21DP DT FD	26 1/16" x 21" x 7"
DRB36M X 21DP DT FD	32 1/16" x 21" x 7"
18" DEEP	
DRB12M X 18DP DT FD	8 1/16" x 18" x 7"
DRB15M X 18DP DT FD	11 1/16" x 18" x 7"
DRB18M X 18DP DT FD	14 1/16" x 18" x 7"
15" DEEP	
DRBKDC33X 15DP DT FD	22 23/32" x 15" x 2 11/32"

DRAWER FRONT DIMENSIONS		
PART NAME	FULL OVERLAY	PARTIAL OVERLAY
STANDARD DRAWER FRONT		
DDF12	11 9/16" x 5 13/16"	9 7/8" x 5 1/8"
DDF15	14 9/16" x 5 13/16"	12 7/8" x 5 1/8"
DDF18	17 9/16" x 5 13/16"	15 7/8" x 5 1/8"
DDF21	20 9/16" x 5 13/16"	18 7/8" x 5 1/8"
DDF24	23 9/16" x 5 13/16"	21 7/8" x 5 1/8"
DDF27	26 9/16" x 5 13/16"	24 7/8" x 5 1/8"
DDF30	29 9/16" x 5 13/16"	27 7/8" x 5 1/8"
DDF33	32 9/16" x 5 13/16"	30 7/8" x 5 1/8"
DDF36	35 9/16" x 5 13/16"	33 7/8" x 5 1/8"
DDFOV33	32 9/16" x 7 7/16"	-
LARGE DRAWER FRONT		
DDF12D	-	9 7/8" x 10 13/16"
DDF12M	11 9/16" x 11 27/32"	-
DDF15D	-	12 7/8" x 10 13/16"
DDF15M	14 9/16" x 11 27/32"	-
DDF18D	-	15 7/8" x 10 13/16"
DDF18M	17 9/16" x 11 27/32"	-
DDF21D	-	18 7/8" x 10 13/16"
DDF21M	20 9/16" x 11 27/32"	-
DDF24D	-	21 7/8" x 10 13/16"
DDF24M	23 9/16" x 11 27/32"	-
DDF30D	-	27 7/8" x 10 13/16"
DDF30M	29 9/16" x 11 27/32"	-
DDF36D	-	33 7/8" x 10 13/16"
DDF36M	35 9/16" x 11 27/32"	-

PLYWOOD SHELF DIMENSIONS	
PART NAME	DIMENSION
STANDARD DRAWERS	
12" DEEP	
9" SHELF PLY	7 1/4" x 10 1/4" x 3/4"
12" SHELF PLY	10 1/4" x 10 1/4" x 3/4"
15" SHELF PLY	13 1/4" x 10 1/4" x 3/4"
18" SHELF PLY	16 1/4" x 10 1/4" x 3/4"
21" SHELF PLY	19 1/4" x 10 1/4" x 3/4"
24" SHELF PLY	22 1/4" x 10 1/4" x 3/4"
27" SHELF PLY	25 1/4" x 10 1/4" x 3/4"
30" SHELF PLY	28 1/4" x 10 1/4" x 3/4"
33" SHELF PLY	31 1/4" x 10 1/4" x 3/4"
36" SHELF PLY	34 1/4" x 10 1/4" x 3/4"
39" SHELF PLY	37 1/4" x 10 1/4" x 3/4"
45" SHELF PLY	43 1/4" x 10 1/4" x 3/4"
24" DEEP	
33" SHELF 24DP PLY	31 3/16" x 22 1/8" x 3/4"
36" SHELF 24DP PLY	34 3/16" x 22 1/8" x 3/4"
UTILITY CABINET SHELVES	
S1824	16 3/16" x 22 1/8" x 3/4"
S2424	22 3/16" x 22 1/8" x 3/4"
S3024	28 3/16" x 22 1/8" x 3/4"
S3324	31 3/16" x 22 1/8" x 3/4"

ROLL-OUT ACCESSORY DIMENSIONS	
PART NAME	DIMENSION
DEEP ROLL-OUT TRAYS	
DROT15	10 3/4" x 21" x 3 1/2"
DROT18	13 3/4" x 21" x 3 1/2"
DROT21	16 3/4" x 21" x 3 1/2"
DROT24	19 3/4" x 21" x 3 1/2"
DROT27	22 3/4" x 21" x 3 1/2"
DROT30	25 3/4" x 21" x 3 1/2"
DROT33	28 3/4" x 21" x 3 1/2"
DROT36	31 3/4" x 21" x 3 1/2"

Parts SPECIFICATIONS

HINGES	
PART NAME	DESCRIPTION
HINGE SOL CC6WY 45	Partial Overlay soft-close hinge with 6-way adjustment
HINGE FOL CC6WY 45DP	Full Overlay soft-close hinge with 6-way adjustment
HINGE CCFACEMOUNT 45	Soft-close hinge for oven cabinets
HINGE 170 FRAMED	Door-to-Frame hinge for BSS or WER cabinet
HINGE ER	Door-to-Door hinge for BSS or WER cabinet
HINGE SPACER SHIM	Shim used between Hinge and Face Frame, adds inward left/right adjustment (for use on hinges as needed)

GLIDES	
PART NAME	DESCRIPTION
GLIDE FD CCL24	Left soft-close drawer glide for 24" deep cabinet
GLIDE FD CCR24	Right soft-close drawer glide for 24" deep cabinet
GLIDE FD CCL21	Left soft-close drawer glide for 21" deep cabinet
GLIDE FD CCR21	Right soft-close drawer glide for 21" deep cabinet
GLIDE FD CCL18	Left soft-close drawer glide for Kneehole Drawer
GLIDE FD CCR18	Right soft-close drawer glide for Kneehole Drawer

SCREWS	
PART NAME	DESCRIPTION
SCREW BRACKET DDF	Screw to attach DDF BRACKET FOL bracket to drawer fronts (2 per bracket)
SCREW BRACKET DRB	Screw to attach DDF BRACKET FOL bracket to drawer bodies (2 per bracket)
SCREW GLIDE CC	Attach glide to front frame (1 per glide)
SCREW HINGE/DR	Screw for hinge to door
SCREW HINGE/FR	Screw for hinge to frame

CLIPS/BRACKETS	
PART NAME	DESCRIPTION
BRACKET GL BD UNI FG	Left/Right back bracket for bottom drawer glides on BMC27
BRACKET GL UD UNI FG	Left/Right back bracket for top drawer glides on BMC27
BRACKET GL UNI FDI	Left/Right back bracket for drawer glides (excluding BMC27)
CLIP SHELF NP SPIN	Locking shelf clip for spin units
DDF BRACKET FOL	Attachment bracket for wastebasket cabinet doors and all drawer fronts
DDF BRACKET CCAP FOL	Cover cap for DDF BRACKET FOL
DRB MOUNT CLIP L FD	Left release clip for DROT's and drawers
DRB MOUNT CLIP R FD	Right release clip for DROT's and drawers

WOOD SPIN UNITS	
PART NAME	DESCRIPTION
BSS33 SHLF WD NP PLY	Wood spin unit and plywood shelf for BSS33 WD
BSS36 SHLF WD NP PLY	Wood spin unit and plywood shelf for BSS36 WD

MISCELLANEOUS PARTS	
PART NAME	DESCRIPTION
BUMPER CLEAR	Door bumper - Sheet of 4
BWBB18-2 FOL KIT	Wastebasket kit for FOL BWBB18-2
BWBB18-2 SOL KIT	Wastebasket kit for POL BWBB18-2
CLIP LOCK 3/4 4PK	Plastic clip locks used for base cabinet shelves - 4 Pack
DDF FASTENER	Installation clips for dummy drawer fronts - includes 2 sets and installation screws
GLIDE FRAME SPACER	Frame spacer for DROT glide
SHELF REST METAL 4PK	Metal shelf rests used for wall cabinet shelves - 4 Pack
TOUCHUP KIT	Touchup Kit includes a putty stick, touchup marker and a sheet of (4) bumpers
WASTEBASKET 35QT SLV	Silver 35-quart trashcan

At a Glance

Care & Cleaning

While our finishing processes promote durability, care should be taken to preserve the original factory finish:

- Wipe up spills immediately
- Use mild soaps only
- Be sure to read all cabinet care guidelines and cleaning product instructions carefully

Use a touch-up stick to fill any scratches or nicks and remove excess residue, leaving a smooth surface. Touch-up kits are included with every kitchen sink base cabinet or can be ordered separately as needed.

On-Trend Looks For Less

Quality on-trend cabinetry styles and finishes at a great value.

Painted Lily

FINISHES



DOOR STYLE KOTA



DRAWER FRONT KOTA



DOOR STYLE ALOR



DRAWER FRONT ALOR

Painted Steel

FINISHES



DOOR STYLE KOTA



DRAWER FRONT KOTA

Important Information

Lifetime Limited Warranty

The manufacturer of 1951 Foundations hereby warrants to the original purchaser, for residential applications only, that all 1951 Foundations, cabinets and accessories, are free from defects in materials and workmanship. This warranty runs for as long as you own your home and begins upon the date of delivery to you. This warranty is expressly limited to repair or replacement of the defective part at the discretion of the manufacturer of 1951 Foundations, and does not include labor for removal or replacement. This warranty does not extend to defects caused by improper handling, storage, installation, assembly or disassembly, intentional damage, product modifications, exposure to the elements including humidity which may result in warping or splitting, accidental misuse, abuse or negligence.

Natural woods may vary in texture, color and wood grain, and exhibit subtle changes as they age. For example, wood joints may eventually have visible cracking around the joint area and cabinet colors may darken or lighten over time. Sunlight, smoke, moisture, household cleaners and other environmental conditions may cause materials to vary from their original color and/or to warp, split or crack. These variations are considered to be the nature of the material in relation to its environmental exposure and are not covered under this warranty.

Limitations & Disclaimers

THE MANUFACTURER OF 1951 FOUNDATIONS MAKES NO OTHER WARRANTIES OTHER THAN THOSE SET FORTH HEREIN AND ALL OTHER WARRANTIES ARE HEREBY DISCLAIMED. THE IMPLIED WARRANTIES OF MERCHANTABILITY AND FITNESS FOR A PARTICULAR PURPOSE ARE LIMITED IN DURATION TO THE LENGTH OF THE LIMITED WARRANTY PERIOD. THE LIMITED WARRANTIES SET FORTH HEREIN ARE LIMITED TO THE FIRST AND ORIGINAL BUYER AND ARE NOT TRANSFERABLE THEREAFTER. IN NO EVENT SHALL THE MANUFACTURER OF 1951 FOUNDATIONS BE LIABLE FOR INCIDENTAL OR CONSEQUENTIAL DAMAGES TO THE PURCHASER OR TO ANY THIRD PARTY, INCLUDING, WITHOUT LIMITATION, DAMAGES ARISING FROM PERSONAL INJURY, LOST PROFITS, LOSS OF BUSINESS OPPORTUNITY, LOSS OF PROPERTY, ECONOMIC LOSSES, OR STATUTORY OR EXEMPLARY DAMAGES, WHETHER FROM NEGLIGENCE, WARRANTY, STRICT LIABILITY OR OTHERWISE. Some states do not allow the exclusion or limitation of incidental or consequential damages, or limitations on how long an implied warranty lasts, so the above limitations and exclusions may not apply to you. This warranty gives you specific legal rights, and you may also have other rights, which vary from state to state.

Claims

All claims for defective cabinets and accessories must be initiated with the Partner Team and must specify the defects present in the cabinets and accessories. After the manufacturer has had an opportunity to inspect the cabinets and accessories, it will, at their discretion, either replace defective cabinets and accessories or repair any defects in the cabinets and accessories.

Continuous Improvement

In keeping with our policy of continuous product refinement, 1951 Cabinetry reserves the right to change specifications in design and materials as conditions require.



Questions?

Contact the Partner Team.

We are here for you.

1-877-957-7278

Monday – Friday

8:00 AM – 7:00 PM EST

P.O. Box 1980

Winchester, Virginia 22604

www.1951Cabinetry.com/Foundations

Photography is for illustration purposes only. Actual colors may vary slightly due to the printing process. For actual color selections, please consult your 1951 Cabinetry representative. Every effort was made to assure accuracy of the information contained herein at the time of printing; however, 1951 Cabinetry makes no representations to such accuracies.

If you would like further clarification about any of our products or processes, please call the 1951 Cabinetry Partner Team.

