

1951TM

Progressions 



Specification Guide 2026

Beautifully Budget Friendly

Elevate the look of any space without going over budget. Our Progressions Cabinetry line features three distinct cabinet styles, complemented by five durable finishes.

NASH Modern simplicity meets everyday durability.

Our Nash cabinets bring a refined, minimalist look to today's homes. The partial overlay door design features a sleek white Thermofoil finish that delivers a smooth, seamless appearance perfect for contemporary or transitional spaces. With its clean lines and bright, polished feel, Nash creates a sense of openness and calm in any room. Built with long-lasting Thermofoil, this style resists chips, cracks, and everyday wear—offering a lasting, low-maintenance finish that looks effortlessly modern.

CODY Versatile. Bright. Inviting.

Our Cody cabinets bring effortless style and adaptability to any room. The clean Shaker design comes in two on-trend finishes: a crisp, versatile white that opens up spaces with light and simplicity, or a warm, earthy Pebble tone that adds depth and sophistication. Mix and match both colors for a personalized touch that feels fresh and timeless. Crafted from durable Thermofoil, Cody offers consistent color, smooth surfaces, and a finish that resists chipping and cracking—made for real-life durability with designer appeal.

GARRETT Rich warmth, timeless craftsmanship.

Garrett embodies timeless elegance, showcasing the natural character and depth of wood through a clean, recessed panel profile and refined detailing. Available in rich hardwood Umber, warm mid-tone Oak Bourbon, and light, airy Oak Harvest, each finish enhances the authentic grain movement and organic texture of the material. The result is a layered visual depth and subtle tactile appeal that brings warmth, comfort, and understated sophistication to any space. Every finish delivers enduring style with a quiet touch of luxury.

What's New for 2026

Two new Oak finishes are now available. Introducing Garrett Bourbon Oak and Garrett Harvest Oak.

If you have any questions, contact our Partner Team at 1-877-957-7278.

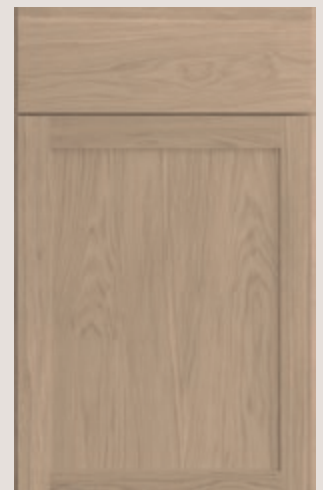
For easy identification, we have highlighted the new offerings.

Door Style

Garrett Bourbon Oak



Garrett Harvest Oak



In keeping with our policy of continuous product refinement, 1951 Cabinetry reserves the right to change specifications in design and materials as conditions require.

Table of Contents

Door Styles & Cabinet Construction

Cody.....	4
Garrett	5
Nash	6
Cabinet Materials	7
Cabinet Opening Dimensions	7
Cabinet Construction.....	8
Cabinet Overlay Dimensions	9

Product Specifications

Wall Cabinets.....	12
Base Cabinets.....	13
Vanity Cabinets.....	15
Tall Cabinets.....	15
Accessory Items.....	16
Molding.....	18
Hardware	19
Important Information.....	20



ANSI/KCMA A161.1



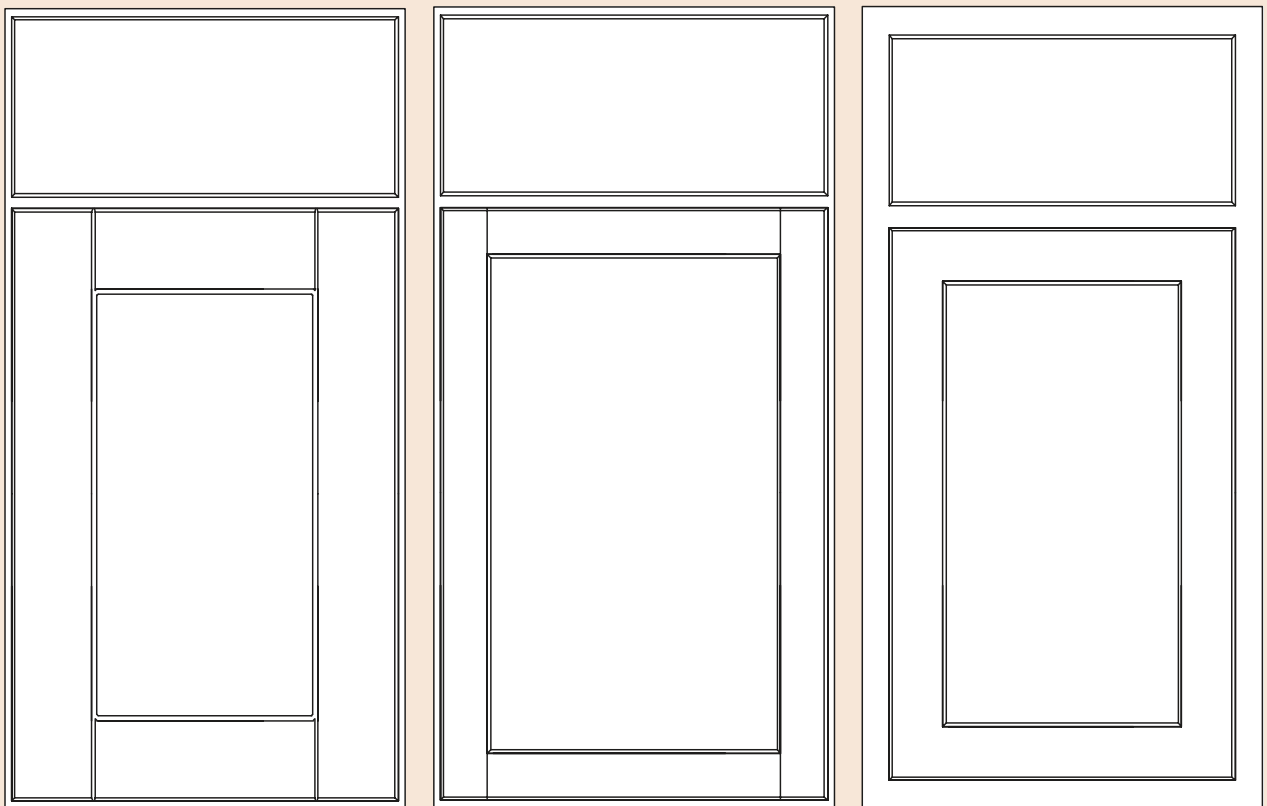
1951 PROGRESSIONS
ENVIRONMENTAL STEWARDSHIP PROGRAM (ESP)
ALL PRODUCTS IMPACT THE ENVIRONMENT.
FOR ESP PROGRAM DETAILS, VISIT 1951PROG.COM

All cabinetry manufactured by 1951 Progressions is certified by the Kitchen Cabinet Manufacturers Association (KCMA).

1951 Progressions has received certification by KCMA Environmental Stewardship Program on all products.

Door Styles & Cabinet Construction

The 1951 Progressions Collection offers a selection of three shaker door designs available in five popular finishes—White, Pebble, Umber, Harvest Oak, and Bourbon Oak—delivering a stylish yet affordable cabinetry solution.

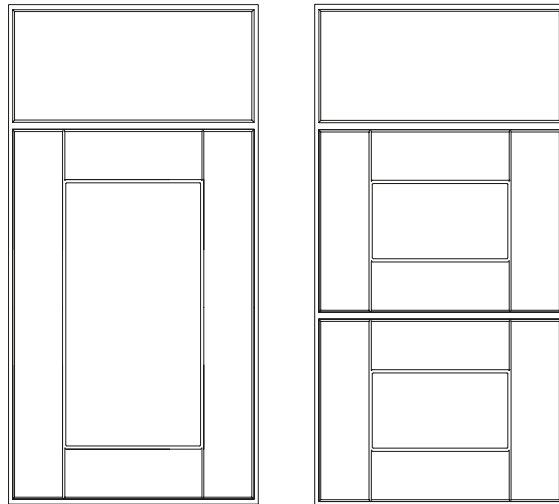


Door Styles

Cody

Cody features a clean, classic Shaker-inspired design that blends simplicity with enduring style. Its crisp lines and smooth, seamless construction create a refined look that complements both modern and traditional spaces. The understated profile allows the finish to take center stage, delivering a polished and versatile aesthetic that enhances a wide range of kitchen designs. With its balanced proportions and timeless appeal, Cody brings a sense of order, brightness, and effortless sophistication to any room.

Available in two versatile Thermofoil finishes, Cody offers options that suit a variety of design preferences. Thermofoil White delivers a fresh, bright appearance that opens up any space and creates a light, airy atmosphere. Its clean, pristine tone provides a timeless foundation that pairs beautifully with nearly any color palette or design style. Pebble introduces a soft blend of warm brown and subtle gray, creating a calm and sophisticated neutral that adds depth while remaining highly adaptable. Together, these finishes allow Cody to serve as either a crisp, modern statement or a warm, balanced backdrop for a thoughtfully designed kitchen.



3"

Finish	Code
White	1SSW
Pebble	1SDV

Door Styles

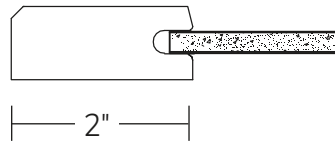
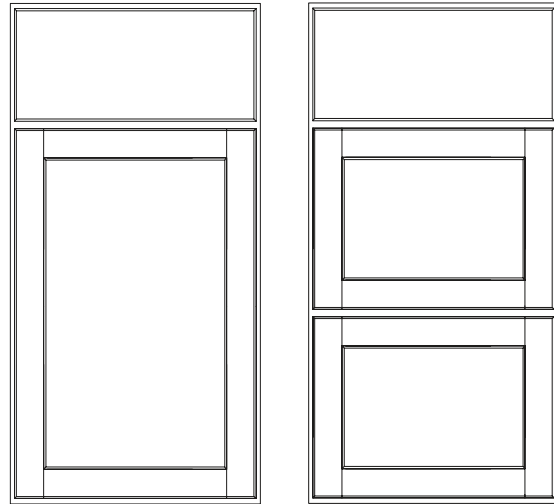
Garrett

NEW! FINISHES

Garrett showcases a refined recessed panel design that highlights the natural beauty and character of wood. Clean lines and balanced proportions give the door a timeless appeal, making it well suited for both traditional and transitional kitchens. The Garrett style emphasizes authentic woodgrain and craftsmanship, creating depth, warmth, and a welcoming presence in any space.

Available in three distinctive stain finishes, Garrett offers a range of tones to suit a variety of design preferences. Bourbon Oak delivers a warm, medium oak tone that enhances the natural grain while bringing comfort and richness to the room. Umber introduces a deep, espresso-inspired finish that adds bold sophistication and dramatic contrast. Harvest Oak presents a light, airy oak tone that brightens the space and highlights subtle grain patterns for a fresh, contemporary feel. Together, these finishes allow Garrett to adapt effortlessly to a range of interiors while maintaining a timeless sense of style and quality craftsmanship.

Finish	Code
Umber	1SJM
Bourbon Oak	1SSB
Harvest Oak	1SLO



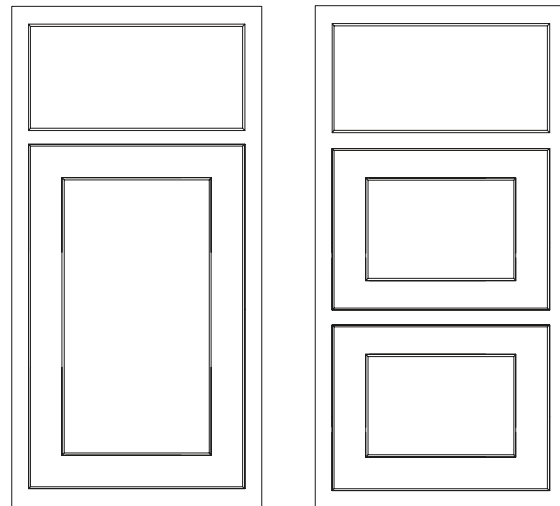
Door Styles

Nash

NEW! DOOR STYLE

The Nash door blends timeless shaker simplicity with the clean, fresh appeal of a crisp white thermofoil finish. Its partial overlay design offers a classic touch, making it a versatile choice that complements both modern and traditional spaces.

Finished in Thermofoil White, Nash delivers a bright, crisp appearance that enhances light and creates a sense of openness within the space. The smooth, durable thermofoil surface provides a seamless finish that is easy to maintain while offering lasting beauty. Its fresh, neutral tone serves as a versatile backdrop that pairs effortlessly with a wide range of materials, colors, and hardware styles, allowing homeowners to create a kitchen that feels both elegant and inviting.



— 2 1/4" —

Finish	Code
White	2SPW

Choosing Your Material

Hardwood

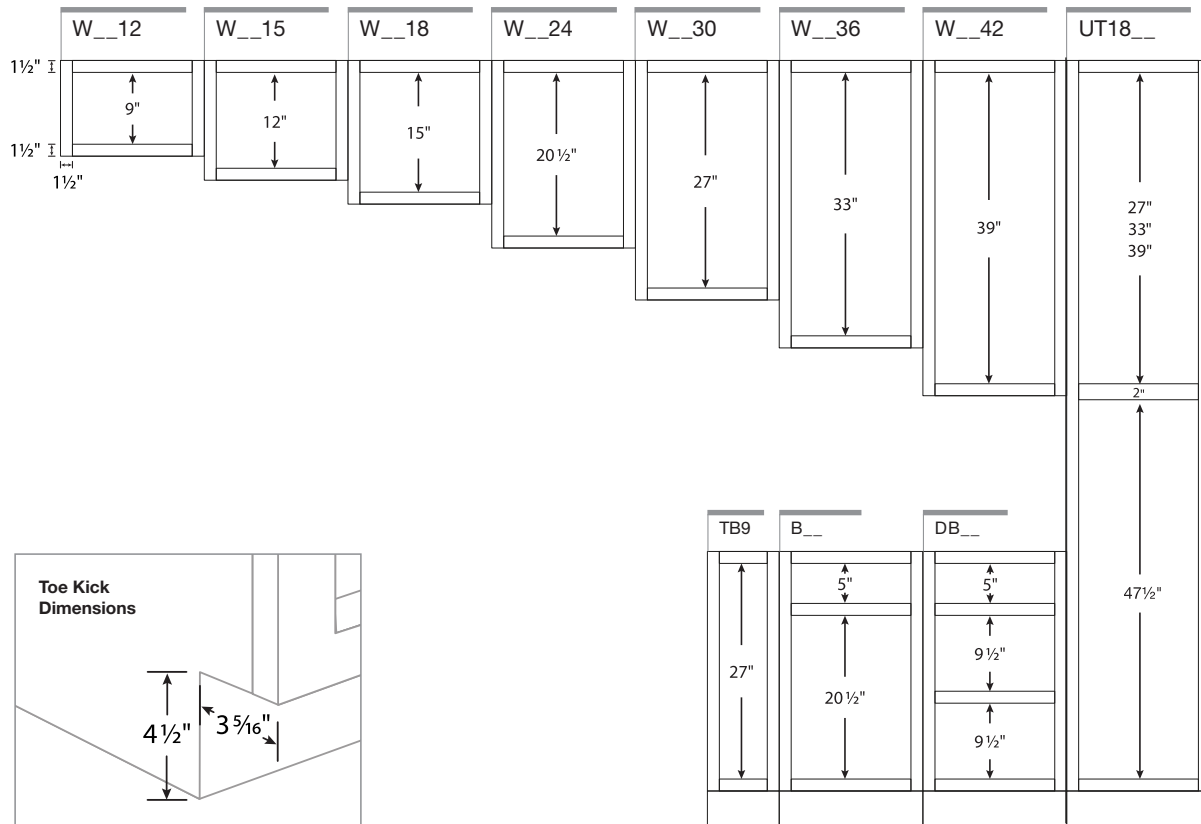
Hardwood cabinetry has a dense structure and comes from a combination of deciduous trees such as maple, oak, beech, birch, or poplar. Natural colors range from light blonde to dark reddish-brown tones. These hardwoods may contain mineral streaks, slight differences in graining, and color variations.

Thermofoil

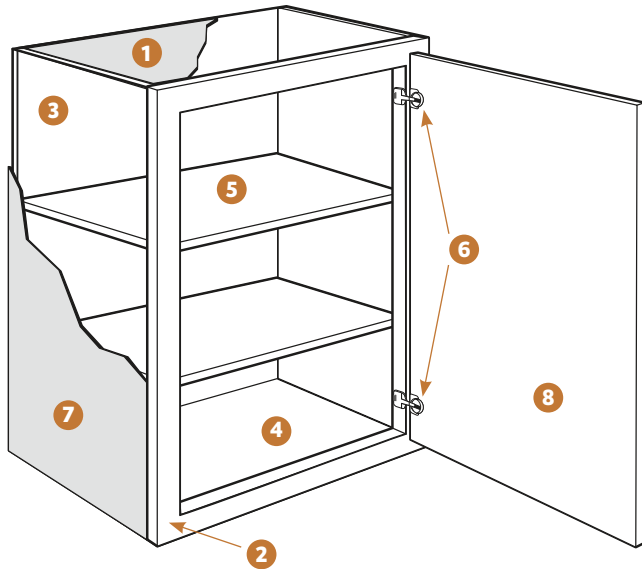
Thermofoil is a process whereby a thick vinyl film is bonded permanently to a warp-resistant engineered wood core. Because the color is consistent throughout the film, the surface is durable, easy to clean, and resistant to chipping and cracking.

Cabinet Opening Dimensions

Illustrations specify dimensions of vertical stiles and horizontal rails, inset toe kick, and standard interior opening heights. When selecting cabinetry for installation above or near any appliance, refer to the appliance manufacturer's specification for clearance and venting requirements.

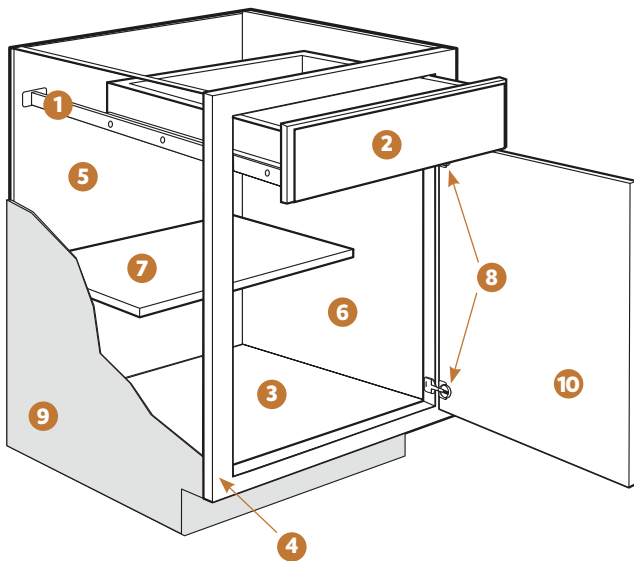


Cabinet Construction



Wall Cabinets

- 1 **Top/Bottom Panels:** $\frac{3}{8}$ " engineered wood
- 2 **Face Frame:** 1 $\frac{1}{2}$ " wide frame material
- 3 **Back Panel:** Full $\frac{3}{8}$ " back panel
- 4 **Interiors:** Natural wood-grain laminate finish on engineered wood
- 5 **Shelves:** $\frac{3}{4}$ " thick adjustable shelves
- 6 **Hinges:** Fully concealed and adjustable
- 7 **End Panels:** $\frac{1}{2}$ " engineered wood with laminated exterior to match cabinet finish
- 8 **Door:** Reversible door on single-door cabinets for left or right opening; hinged on the left from the factory; double-door cabinets are butt doors with no center stile (excluding 39" or wider)



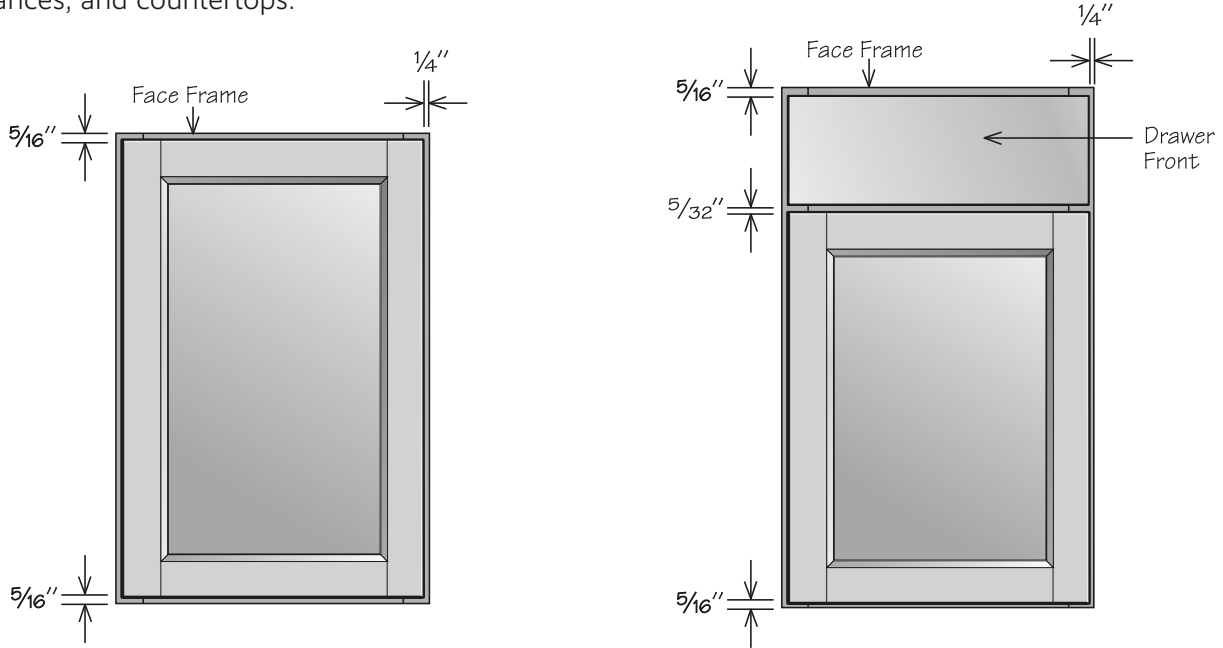
Base Cabinets

- 1 **Drawer Glides:** $\frac{3}{4}$ " access ball bearing
- 2 **Drawer Box:** Hardwood, 4-sided drawer box with fully encapsulated bottom
- 3 **Bottom Panels:** $\frac{3}{8}$ " engineered wood
- 4 **Face Frame:** 1 $\frac{1}{2}$ " wide frame material
- 5 **Back Panel:** Full $\frac{3}{8}$ " back panel with a natural laminate interior
- 6 **Interiors:** Natural wood-grain laminate finish on engineered wood
- 7 **Shelf:** $\frac{3}{4}$ " thick adjustable half-depth shelf
- 8 **Hinges:** Fully concealed and adjustable
- 9 **End Panels:** $\frac{1}{2}$ " engineered wood with laminated exterior to match cabinet finish
- 10 **Door:** Reversible door on single-door cabinets for left or right opening; hinged on the left from the factory; double-door cabinets are butt doors with no center stile (excluding 39" or wider)

Cabinet Overlay Dimensions

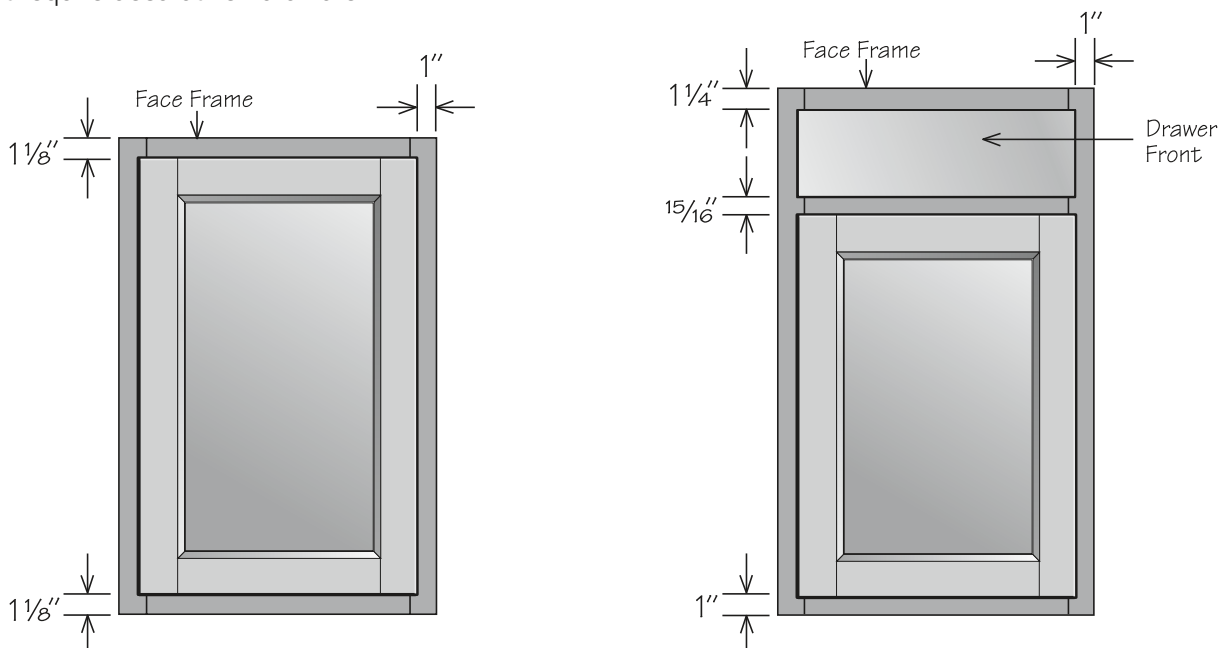
Full Overlay

Full overlay doors are sized to cover nearly all of the cabinet face frame. Full overlay door styles require decorative hardware. To facilitate proper door operation, include at least a 1" filler between the hinged side of full overlay door styles and deeper adjacent objects including cabinets, walls, appliances, and countertops.



Partial Overlay

Partial Overlay (POL) doors are sized to show about an inch of the cabinet face frame, giving the doors some visual depth. Cabinets 39" wide will feature a center stile, creating a 2" gap between doors. Some door styles do not require decorative hardware.



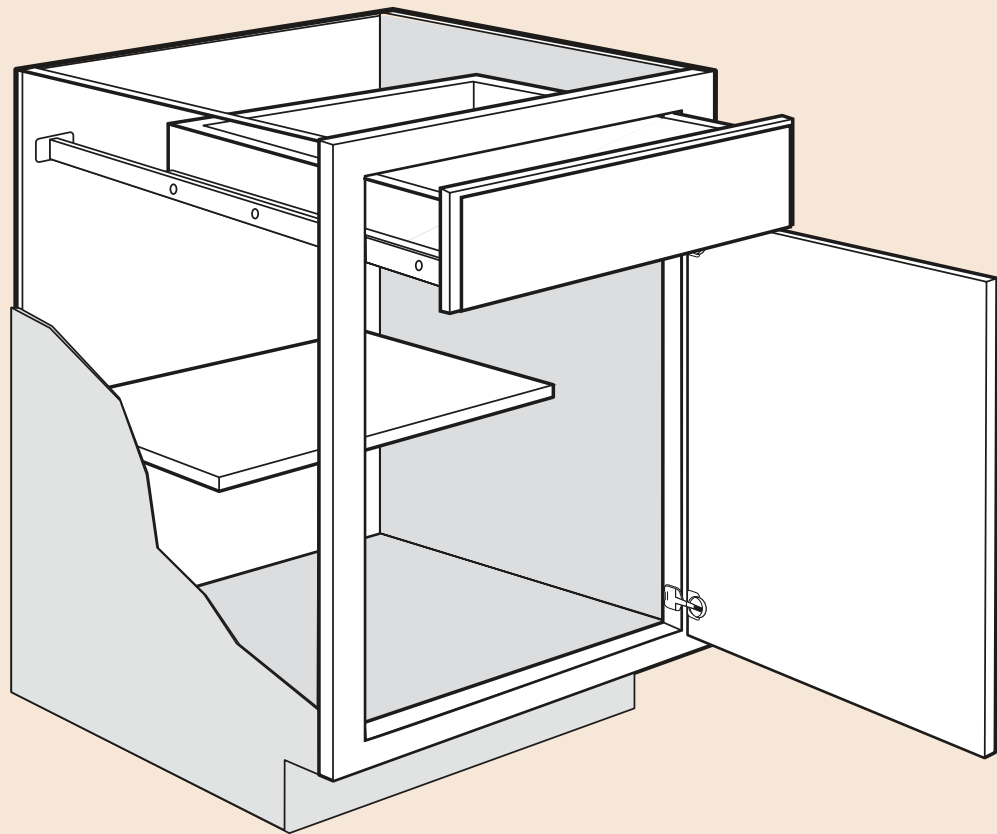
Notes



A series of horizontal lines for writing notes, consisting of 25 evenly spaced lines that fill the majority of the page.

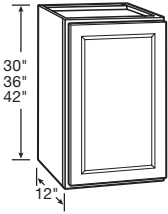
Product Specs

Create the kitchen that perfectly fits your lifestyle. You'll find the quality construction and features at prices that help you get the most kitchen for your budget—and years of enjoyment.



Wall Cabinet Specifications

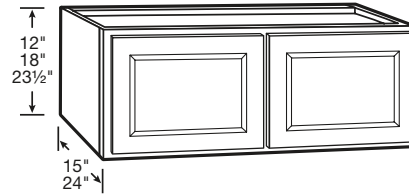
Wall Cabinet | 1 Door



- Includes two adjustable shelves
- Hinged left, field reversible

30" HIGH	36" HIGH	42" HIGH
W1230	W1236	W1242
W1530	W1536	W1542
W1830	W1836	W1842
W2130	W2136	W2142
W2430	W2436	W2442

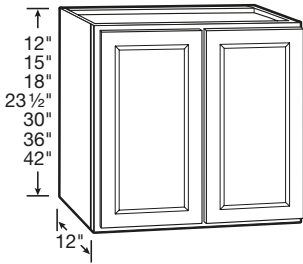
Refrigerator Wall Cabinet | 2 Butt Doors



- Includes one adjustable shelf (where applicable)

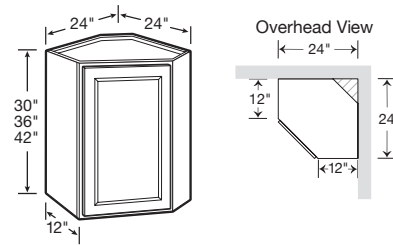
12" HIGH • No Shelf	18" HIGH • No Shelf	24" HIGH • 1 Shelf
24" Deep	24" Deep	24" Deep
W3612X24DP BUTT	W3618X24DP BUTT	W3624X24DP BUTT
		15" Deep
		W3024X15DP BUTT

Wall Cabinet | 2 Butt Doors



12" HIGH • No Shelf	15" HIGH • No Shelf	18" HIGH • No Shelf
W3012 BUTT	W3015 BUTT	W3018 BUTT
W3612 BUTT	W3615 BUTT	W3618 BUTT
24" HIGH • 1 Shelf	30" HIGH • 2 Shelves	36" HIGH • 2 Shelves
W3024 BUTT	W2730 BUTT	W2736 BUTT
W3624 BUTT	W3030 BUTT	W3036 BUTT
	W3330 BUTT	W3336 BUTT
	W3630 BUTT	W3636 BUTT
42" HIGH • 2 Shelves		
W2742 BUTT		
W3042 BUTT		
W3342 BUTT		
W3642 BUTT		

Corner Wall Cabinet

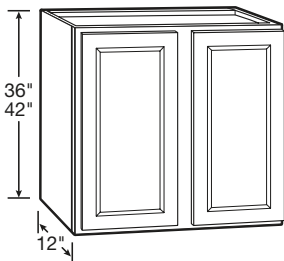


- Installs in a 24" x 24" wall area
- 30" high includes one adjustable shelf
- 36" high and 42" high include two adjustable shelves
- Hinged left, field reversible

30" HIGH	36" HIGH	42" HIGH
CW2430	CW2436	CW2442

Wall Cabinet | 2 Doors

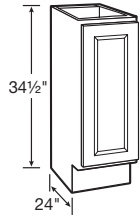
NEW! **SIZE**



36" HIGH • 2 Shelves	42" HIGH • 2 Shelves
W3936	W3942

Base Cabinet Specifications

Full-Height Base Cabinet | 1 Door

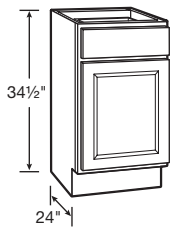


- One half-depth adjustable shelf included
- Hinged left, field reversible

34 1/2" HIGH

TB9

Base Cabinet | 1 Door and 1 Drawer

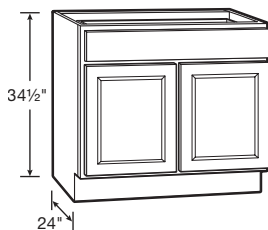


- Ball-bearing drawer glides
- One half-depth adjustable shelf included
- Hinged left, field reversible

34 1/2" HIGH

B12	B21
B15	B24
B18	

Base Cabinet | 2 Butt Doors and 1 Drawer



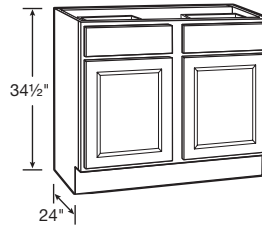
- Ball-bearing drawer glides
- One half-depth adjustable shelf included

34 1/2" HIGH

B27 BUTT
B30 BUTT
B33 BUTT
B36 1TD BUTT

Base Cabinet | 2 Doors and 2 Drawers

NEW! **SIZE**

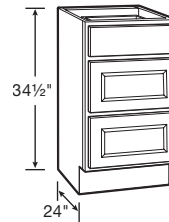


- Ball-bearing drawer glides
- One half-depth adjustable shelf included

34 1/2" HIGH

B39

Drawer Base Cabinet | 3 Drawers

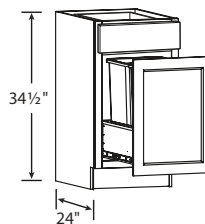


- 18" wide and 24" wide include ball-bearing drawer glides
- 30" wide and 36" wide include full-extension, heavy-duty drawer glides on all three drawers
- Deep drawers feature five-piece drawer fronts

34 1/2" HIGH

DB18	DB30
DB24	DB36 1TD

Base Cabinet | 1 Door with Wastebasket Pull-Out and 1 Drawer



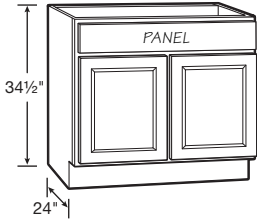
- Top drawer includes ball-bearing drawer glides
- Wastebasket pullout includes heavy-duty ball-bearing drawer glides and two 35-quart capacity bins

34 1/2" HIGH

BWBB18-2

Base Cabinet Specifications

Sink/Cooktop Base | 2 Butt Doors and 1 Panel

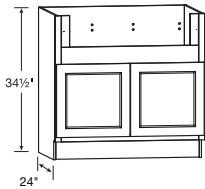


- Full-height back panel
- No shelf
- Subtract 1 1/2" from width and 1" from depth for available sink bowl opening
- Refer to sink/cooktop manufacturer's specifications for adequate clearance and required installation materials
- Touch-up kit included

34 1/2" HIGH

SB30 BUTT TU
SB36 BUTT TU

Deep Sink Base



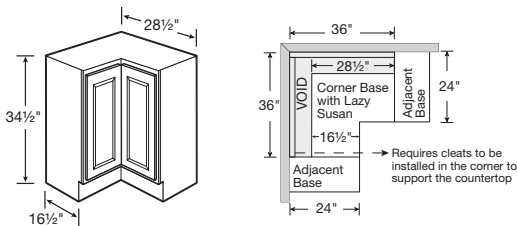
APRON CUTOUT DIMENSIONS			
ACTUAL WIDTH	MAX. WIDTH	ACTUAL HEIGHT	MAX. HEIGHT
29"	33"	7 1/2"	11"

- 2" stiles and 4" rail are trimmable to accommodate various size sinks/cooktops
- Smaller size sinks/cooktops can be accommodated with use of 3" or 6" filler
- No shelf

34 1/2" HIGH

DSB36 BUTT

Corner Base Carousel | Spin Unit

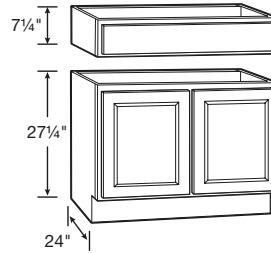


- Installs in a 36" x 36" wall area
- Two-piece overlay door hinged together in the middle
- Two 360° independently rotating metal racks
- Exterior side panels are natural laminate
- Hinged left, reversible in field
- Additional space recommended if appliance is installed on the hinged side of this cabinet for proper door operation
- If unit has an exposed side, order an end panel separately

34 1/2" HIGH

CAR36

Accessible Sink Base

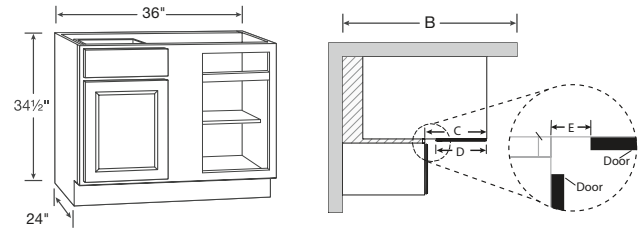


- Exterior side panels are natural maple laminate
- Features one false drawer front on detachable cabinet header
- No shelf

34 1/2" HIGH

ASB36 BUTT

Blind Base Cabinet



BLIND CABINET DIMENSIONS

OVERLAY	ACTUAL CABINET WIDTH	WALL SPACE		EXPOSED FRAME C*	DOOR WIDTH D	EXPOSED STILE E*
		MIN B	MAX B			
FULL	36"	40 1/8"	46 1/2"	18"	14 3/4"	3 3/8"
PARTIAL	36"	39 1/4"	46 1/2"	18"	13"	4"

*Only applies when cabinet is pulled to 42"

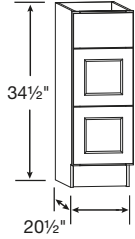
- Includes one half-depth adjustable shelf
- Door and drawer are reversible to accommodate left or right blind

34 1/2" HIGH

BLB39/45

Vanity Cabinet Specifications

Vanity Drawer Base | 3 Drawers

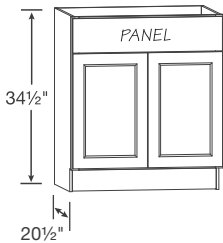


- Deep drawers feature five-piece drawer fronts

34 1/2" HIGH

VDB1234H
VDB1534H
VDB1834H

Vanity Sink Base | 2 Butt Doors and 1 Drawer Panel



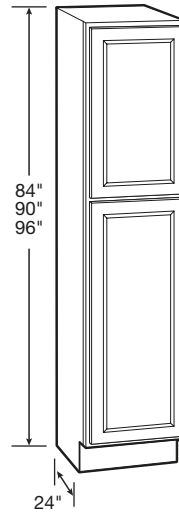
- No shelf
- Subtract 1 1/2" from width and 1 1/8" from depth for available sink bowl opening
- Refer to sink manufacturer's specifications for adequate clearance and required installation materials

34 1/2" HIGH

VSB2434H BUTT
VSB2734H BUTT
VSB3034H BUTT
VSB3334H BUTT
VSB3634H BUTT

Tall Cabinet Specifications

Pantry Cabinet | 24" Deep



- Upper door lines up with 30", 36" and 42" high wall cabinets
- 84" and 90" includes three full-depth adjustable shelves and one full-depth fixed shelf
- 96" includes four full-depth adjustable shelves and one full-depth fixed shelf
- 96" has removable toe kick that is field installed

84" HIGH

UT1824X84 AS

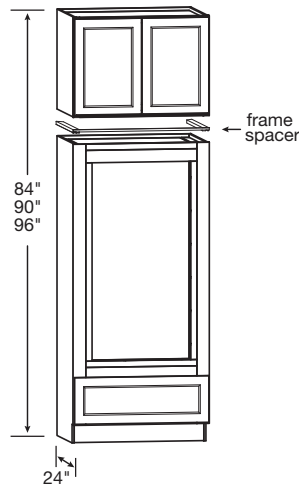
90" HIGH

UT1824X90 AS

96" HIGH

UT1824X96 AS

Double Oven Cabinet | 2 Butt Doors and 1 Drawer



- Includes drawer with full-extension, heavy-duty drawer glides
- Includes 24" deep wall cabinet (ships separately)
- Overhead wall cabinet is not pre-installed to oven cabinet, comes as two pieces, boxed separately
- Rails and stiles around oven opening are trimmable
- Cut-out dimensions:
 - » Width: 24" minimum, 30" maximum
 - » Height: 47 5/8" minimum, 52 1/8" maximum
- Frame spacer included in OVD339624 BUTT only
- 96" high double oven overhead wall cabinet is 23 1/2" high

84" HIGH

OVD338424 BUTT

90" HIGH

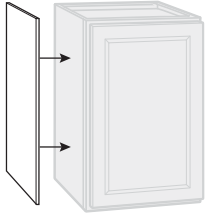
OVD339024 BUTT

96" HIGH

OVD339624 BUTT

Accessory Item Specifications

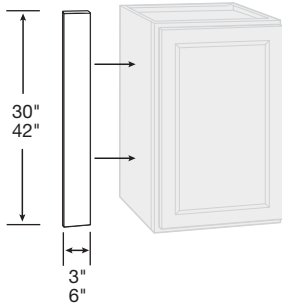
Veneer End Paneling



- Finished veneer panels fit flush
- Umber panels feature stained veneers
- White and Pebble panels are laminate
- Wall panels are 11¼" deep, 30" or 42" high
- Base panels are 23¼" deep x 34½" high
- Finished panel is 48" wide x 34½" high

WALL PANEL	BASE PANEL	FINISHED PANELING
WEP30	BEP34	FP4834
WEP42		

Wall & Base Fillers



- ¾" thick
- Cody door styles feature wrapped-plywood finished on the face only
- Garrett door style features hardwood finished on the face only

3" FILLER	6" FILLER
UF3P	UF6P
UF342P	UF642P

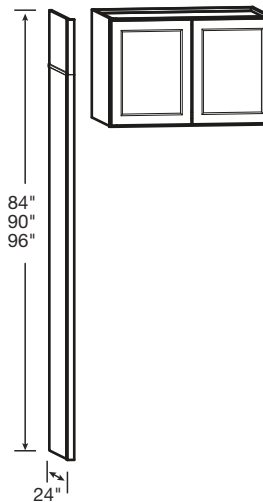
Tall Filler



- ¾" thick
- Cody door styles feature wrapped-plywood finished on the face only
- Garrett door style features hardwood finished on the face only

91½" HIGH
UF392P

Refrigerator Return Kit

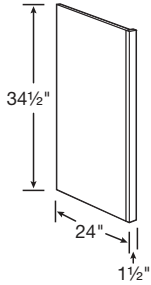


- Kit includes one 84" tall end panel, one 12" tall panel, one 6" tall panel, and one piece of scribe molding
- Kits and Wall Cabinets combine to achieve 84", 90", or 96" overall heights
- Panel seam may be visible in some design applications, depending on height and panel placement — concealed with included scribe molding
- Pairs with 36" wide wall cabinets, sold separately—see Wall Cabinets section
- Refrigerator Return Kit does not create a stand-alone cabinet; must be anchored to other cabinets/wall studs (required for 24" deep wall bridge applications)

96" HIGH
RR96

Accessory Item Specifications

Dishwasher Return

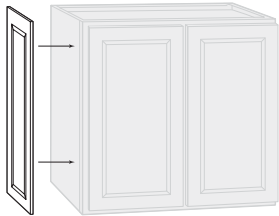


- Reversible for left or right installation
- Exterior finish to match
- Field trimmable to 1"
- Can be notched for toe kick in the field

34 1/2" HIGH

DWR1_5

Decorative Matching Doors



WALL

12" Deep

DMDW30
DMDW36
DMDW42

15" Deep

DMDW30 15D

18" Deep

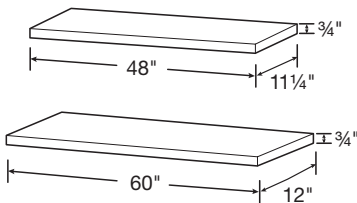
DMDW30 18D

BASE

24" Deep

DMDB

Finished Shelves



- 3/4" depth difference between shelf lengths
- Laminate finish on five sides
- Finished on top, bottom, two short edges, and one long edge

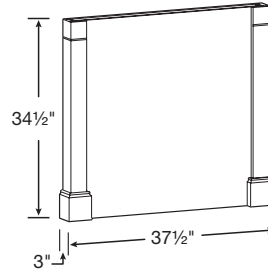
48" WIDE

11 1/4" Deep
FS4812

60" WIDE

12" Deep
FS6012

Decorative Island End Panel Kit

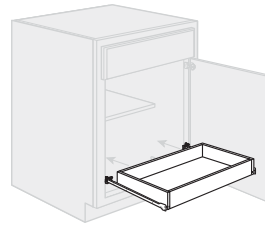


- One post ships loose
- Panel can be cut to accommodate different depths

34 1/2" HIGH

ISLAND PANEL KIT

Sliding Shelf Kit

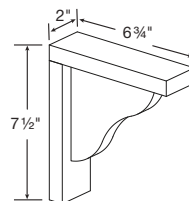


- Ball-bearing drawer glides
- Hardwood drawer box SSK24 fits in 24" wide base
- Hardwood drawer box SSK30 fits in 30" wide base
- Ready to assemble accessory kit requiring field installation
- Kit includes sliding shelf and all hardware

SSK24

SSK30

Countertop Corbel

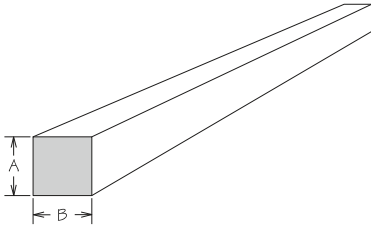


- For decorative use only

CS8

Accessory Item Specifications

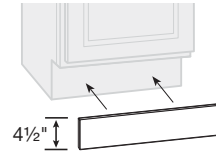
Cleats



- Unfinished

	A	B	LENGTH
HWC 1/2X1/2X91.5	1/2"	1/2"	91 1/2"
HWC 3/4X3/4X91.5	3/4"	3/4"	91 1/2"
HWC 1X2X91.5	3/4"	1 1/2"	91 1/2"
HWC 2X4X91.5	1 1/2"	3 1/2"	91 1/2"

Toe Kick

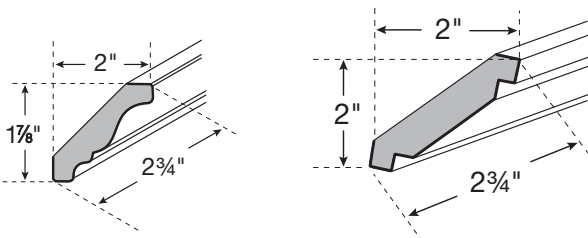


- 91 1/2" long

BTK8

Molding Specifications

Crown Moldings



TRADITIONAL CROWN

SHAKER CROWN

- 91 1/2" long
- Bold line indicates finished surfaces

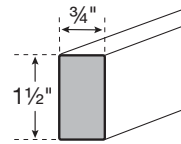
TRADITIONAL CROWN

CM8

SHAKER CROWN

ACM8

Molding Stock

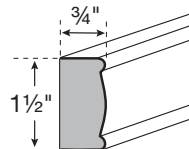


- 91 1/2" long
- Bold line indicates finished surfaces

SQUARE EDGE

SSI_596

Light Rail Molding



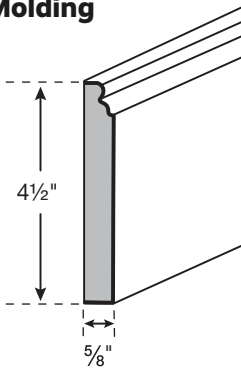
- 91 1/2" long
- Bold line indicates finished surfaces

DECORATIVE EDGE

LBM8

Molding Specifications

Base Molding

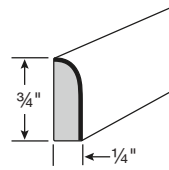


- 91 1/2" long
- Bold line indicates finished surfaces

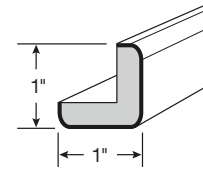
BASE

CLBM8

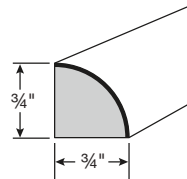
Trim Molding



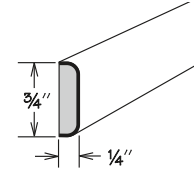
SCRIBE



OUTSIDE CORNER



QUARTER ROUND



BATTEN

- 91 1/2" long
- Bold line indicates finished surfaces

SCRIBE

SM8

QUARTER ROUND

SHM8

OUTSIDE CORNER

OCM8

BATTEN

BM8

Hardware Specifications

Classic Knob



**Classic Knob
Polished Chrome**
KNOB 1173PC



**Classic Knob
Satin Nickel**
KNOB 1173SN



**Classic Knob
Modern Brushed Gold**
KNOB 1173MG



**Classic Knob
Matte Black**
KNOB 1173MB

T-Bar Pull



**T-Bar Pull
Polished Chrome**
PULL 1701PC

3" Center • Overall Length: 5"



**T-Bar Pull
Satin Nickel**
PULL 1701SN

3" Center • Overall Length: 5"



**T-Bar Pull
Modern Brushed Gold**
PULL 1701MG

3" Center • Overall Length: 5"



**T-Bar Pull
Matte Black**
PULL 1701MB

3" Center • Overall Length: 5"

Important Information

Lifetime Limited Warranty

The manufacturer of 1951 Progressions cabinetry warrants to the original residential or commercial purchaser that all 1951 Progressions cabinetry, cabinets, and accessories, are free from defects in materials and workmanship for the following durations, subject to the limitations set forth below:

Original residential purchaser: An "original residential purchaser" is defined as any person who purchases the cabinetry for personal use in his or her private residence. The duration of this limited warranty begins at the date of delivery to the residence and extends until such time as that residential purchaser no longer resides at the residence. "Residential purchaser" extends to any person who owns and resides in the residence where the cabinetry is installed, for whom the cabinetry is purchased by a contractor, remodeler or other person/entity, except in commercial applications defined below.

Original commercial purchaser: An "original commercial purchaser" is any person or entity, including but not limited to landlords, leasing companies, contractors, remodelers, and private or public businesses, who purchases the cabinetry for installation and use in any location that will be leased or used as a rental unit, or used for any other commercial or industrial application. The duration of this limited warranty is five years from the date of the product delivery to the location.

Proof of purchase is required. This limited warranty is expressly limited to repair or replacement of the cabinetry at the discretion of the manufacturer. This limited warranty does not include labor costs for removal, repairs, installation, or replacement.

This limited warranty does not cover defects, damage, or failure caused by improper handling, cleaning, installation, storage, assembly or disassembly, intentional damage, unauthorized product modifications and repairs, exposure to the elements including extreme humidity, moisture, or temperatures which may result in warping, splitting, or finish failure, accidental misuse, abuse, or negligence. Humidity levels in the home with cabinetry outside the range of 30-50% and temperature levels outside the range of 50-85°F are considered extreme.

Natural woods may vary in texture, color, and wood grain, and exhibit subtle changes as they age. For example, wood joints may develop visible cracking around the joint area and cabinet colors may darken or lighten over time.

Sunlight, smoke, moisture, household cleaners and other environmental conditions may cause materials to vary from their original color and/or

to warp, split or crack. These variations are considered to be the nature of the material in relation to its environmental exposure and are not covered under this limited warranty.

THE MANUFACTURER OF 1951 PROGRESSIONS CABINETRY MAKES NO OTHER WARRANTIES OTHER THAN THOSE SET FORTH HEREIN AND ALL OTHER WARRANTIES ARE HEREBY DISCLAIMED.

THE IMPLIED WARRANTIES OF MERCHANTABILITY AND FITNESS FOR A PARTICULAR PURPOSE ARE LIMITED IN DURATION TO THE LENGTH OF THE LIMITED WARRANTY PERIOD.

THE LIMITED WARRANTIES SET FORTH HEREIN ARE LIMITED TO THE FIRST AND ORIGINAL BUYER AND ARE NOT TRANSFERABLE THEREAFTER. PROOF OF PURCHASE IS REQUIRED TO DETERMINE ELIGIBILITY.

EXCEPT AS PROVIDED IN THIS LIMITED WARRANTY AND TO THE MAXIMUM EXTENT PERMITTED BY LAW, THE MANUFACTURER OF 1951 PROGRESSIONS CABINETRY SHALL NOT BE LIABLE FOR INCIDENTAL, DIRECT, INDIRECT, CONSEQUENTIAL, OR SPECIAL DAMAGES TO THE PURCHASER OR TO ANY THIRD PARTY RESULTING FROM ANY BREACH OF WARRANTY OR CONDITION, OR UNDER ANY OTHER LEGAL THEORY, INCLUDING BUT NOT LIMITED TO: LOSS OF USE, LOST PROFITS, LOSS OF BUSINESS OPPORTUNITY, LOSS OF PROPERTY, OR OTHER ECONOMIC LOSSES. THE FOREGOING LIMITATION SHALL NOT APPLY TO PERSONAL INJURY CLAIMS OR ANY STATUTORY LIABILITY FOR INTENTIONAL AND GROSS NEGLIGENT ACTS AND/OR OMISSIONS.

Additional Exclusions, Limitations and Disclaimers

This limited warranty limits the coverage period for the following components that were not manufactured by American Woodmark:

Range hood blowers and components – one year from the date of delivery

SOME STATES DO NOT ALLOW THE EXCLUSION OR LIMITATION OF INCIDENTAL OR CONSEQUENTIAL DAMAGES, OR LIMITATIONS ON HOW LONG AN IMPLIED WARRANTY LASTS, SO THE ABOVE LIMITATIONS AND EXCLUSIONS MAY NOT APPLY TO YOU.

THIS WARRANTY GIVES YOU SPECIFIC LEGAL RIGHTS, AND YOU MAY ALSO HAVE OTHER RIGHTS, WHICH VARY FROM STATE TO STATE.

Claims

All claims under this limited warranty must be submitted to the manufacturer and must specify the defects present in the cabinets and accessories. Photos or samples of the product may be required to determine coverage.

After the manufacturer has had an opportunity to inspect the cabinets and/or accessories, it will, at its discretion, ship at no cost to the customer,

replacement cabinets and/or parts necessary for repair. Products may require chemical or function testing to determine resolution of a warranty claim. Replacement products are subject to availability and may differ from those originally supplied.

Submit all claims to 1951 Progressions at 561 Shady Elm Road, Winchester, Virginia 22602, partners@woodmark.com, OR 877-957-7278.

Continuous Improvement

In keeping with our policy of continuous product refinement, 1951 Progressions reserves the right to change specifications in design and materials as conditions require.

Important Information

Important Health Notice:

Some of the building materials used in this home (or these building materials) emit formaldehyde. Eye, nose, and throat irritation, headache, nausea and a variety of asthma-like symptoms, including shortness of breath, have been reported as a result of formaldehyde exposure. Elderly persons and young children, as well as anyone with a history of asthma, allergies, or lung problems, may be at greater risk. Research is continuing on the possible long-term effects of exposure to formaldehyde.

Reduced ventilation may allow formaldehyde and other contaminants to accumulate in the indoor air. High indoor temperatures and humidity raise formaldehyde levels. When a home is to be located in areas subject to extreme summer temperatures, an air-conditioning system can be used to control indoor temperature levels. Other means of controlled mechanical ventilation can be used to reduce levels of formaldehyde and other indoor air contaminants.

If you have any questions regarding the health effects of formaldehyde, consult your doctor or local health department.

WARNING: This product can expose you to chemicals including formaldehyde, which is known to the State of California to cause cancer, and methanol, which is known to the State of California to cause birth defects or other reproductive harm. For more information go to www.P65Warnings.ca.gov/products

Notes



A series of horizontal lines for writing notes, consisting of 25 evenly spaced lines that fill the majority of the page.



Service You've Come to Expect

Homeowners, contractors, and distributors all want value-priced cabinetry without compromising on service and support. With 1951 Progressions you'll get budget-friendly, high-quality cabinetry backed by the same level of service and support our customers have trusted from 1951 Cabinetry for seven decades.

Unmatched Experience and Craftsmanship

For more than 70 years, we've cared about the end product as much as you and your customers do. That's why we proudly back every 1951 Progressions cabinet with a limited lifetime warranty. With an emphasis on quality, 1951 Progressions offers three door styles and five finishes, so homeowners can enjoy lasting beauty and value for years to come.





1951[™]
Progressions

Questions?

Contact the Partner Team.

We are here for you.

1-877-957-7278

Monday – Friday 8:00 AM – 7:00 PM EST

561 Shady Elm Rd.

Winchester, VA 22602

www.1951Cabinetry.com/Progressions



Photography is for illustration purposes only. Actual colors may vary slightly due to the printing process. For actual color selections, please consult your 1951 Cabinetry representative. Every effort was made to ensure accuracy of the information contained herein at the time of printing; however, 1951 Cabinetry makes no representations to such accuracies. If you would like further clarification about any of our products or processes, please call the 1951 Cabinetry Partner Team.

51P SPEC GUIDE 4-26 ©2025 American Woodmark Corporation® and 1951 Cabinetry™ are registered trademarks of the American Woodmark Corporation.